



SPECIALTY
FURNITURE

Health Care Furniture Catalogue



“Specialized Furniture for the Health Care Environment”

www.specialtyfurniture.ca



SPECIALTY FURNITURE

Today's health care environment is becoming more complex and demanding. Specialty Furniture's collection of furniture has been specifically designed for this environment and combines superior design and functionality with quality construction and durability. All the pieces in our collection have been carefully selected and tested to meet our exacting standards.

"Committed to Service" is Specialty Furniture's promise to our customer. Our service begins at the very beginning of your furniture purchase with helpful and educated representatives who can assist you in selection and design and follows through to the very end with friendly and on time delivery and installation. Specialty Furniture knows that without a true commitment to service we would not be able to deliver a reliable and stress free experience to our customer.



Table of Contents

PRODUCT	PAGE
RESIDENT ROOM - BEDS	3 - 8
RESIDENT ROOM - HEAD & FOOTBOARD/SIDE RAIL CHOICES	9 - 10
RESIDENT ROOM - MATTRESSES	11 - 15
RESIDENT ROOM - CASEGOODS	16 - 19
RESIDENT ROOM - CASEGOOD COLOUR CHOICES & OPTIONS.....	20
RESIDENT ROOM - OVERBED TABLES	21
RESIDENT ROOM - CHAIRS	22 - 24
SEATING - DINING/ACTIVITY CHAIRS.....	25 - 30
SEATING - BISTRO/CAFE CHAIRS.....	31
SEATING - LOUNGE CHAIRS	32 - 36
SEATING - LOUNGE GROUPINGS	37 - 40
SEATING - RECLINERS/ROCKERS/GLIDERS/SLEEP CHAIRS.....	41 - 42
SEATING - BENCHES	43
SEATING - BARIATRIC	44
SEATING - UPHOLSTERY OPTIONS.....	45 - 46
SEATING - GLIDE AND CASTER OPTIONS.....	47
ACCESSORIES - FIREPLACES.....	48
ACCESSORIES - LIGHTING	49 - 50
TABLES - OCCASIONAL TABLES.....	51 - 53
TABLES - PEDESTAL BASES	54 - 57
TABLES - FOUR LEG BASES	58
TABLES - SPECIALTY	59
TABLES - BASE AND TOP OPTIONS.....	60
TABLES - TOP SHAPES AND SIZES.....	61
TABLES - TOP EDGE OPTIONS.....	62
TABLES - TOP LAMINATE.....	63
TABLES - TABLE EPOXY BASE AND EDGE COLOUR CHOICES	64
LIFTS.....	65 - 68
TUBS.....	69 - 70
SEATING SPECIFICATIONS	71
CASEGOOD SPECIFICATIONS	72
TABLE SPECIFICATIONS	73
WARRANTY	73
STANDARD WOOD & FAUX WOOD FINISHES.....	74



Beds

JOERNS CARE 100 ELECTRIC BED



The Joerns Care 100 bed is the best low height bed on the market today for the price. The Care 100 bed model offers value and function without compromising resident or caregiver safety by featuring Joerns tubular frame construction, which is designed to provide a sturdier structure for resident safety. The Care 100's low height provides fall safety for residents at risk of falling and the Care 100 also meets all of the latest bed entrapment guidelines. Joerns' proven grid system deck surface provides ultimate surface support for the resident, air flow around the mattress system and easy to clean openings. Immobilizing legs keep the bed stable and secure for resident transfers at any height but convert to a mobile version in the low height to allow the bed to be moved easily if required. Other features include ultra quiet DC motors, choice of side rail options, baseboard wall bumper, four corner mattress stops, laminate head and footboards in a choice of shapes and colours and an 8" to 26" travel range. Bed comes standard with a rail pendant holder but an optional pendant holder for mounting on the head board is available. The head board pendant holder can be mounted on the resident side of the head board for use when rails are removed from the bed and a location to store the hand control is needed or can be mounted on the back side of the head board for use when you need to hide the hand control away from the resident. 450lb weight capacity. 1 Year Warranty on Electrical and 7 Years on Steel Frame.

SPECIFICATIONS

OVER-ALL LENGTH - 85.5"

OVER-ALL WIDTH (RAILS UP) - 41"

DECK SURFACE - 35"x80"

DECK HEIGHT LOW POSITION - 8.75"

DECK HEIGHT HIGH POSITION - 26"

ITEM

SPFC10080HR

SPFCFBCTRL

SPFN353AL

SPFN105

DESCRIPTION

CARE 100 ELECTRIC BED, 80" DECK, HEAD SECTION RAILS

FOOTBOARD CONTROL OPTION for CARE 100 BED

4" BED LENGTH EXTENSION KIT

PENDANT HOLDER FOR HEAD BOARD (RAIL HOLDER COMES STANDARD)

OPTIONS:



Optional Footboard Control Panel



Optional Pendant Holder for Head Board



JOERNS EASYCARE RIL ELECTRIC LOW HEIGHT BED



The new Joerns EasyCare® RIL's special Toroidal architecture engineered steel frame is up to 30 times stronger than standard angle iron. The EasyCare adjustable low height bed has a proven grid-style sleep surface that provides security for resident positioning, air flow around the mattress system and easy to clean openings. The EasyCare bed is on stable legs at all travel heights and only mobile in the low position for those facilities where great stability is desired at all care heights. Other features include ultra quiet DC motors, baseboard wall bumper, four corner mattress stops, choice of side rail options, laminate head and footboards in a choice of shape and color, and a 7" to 30" travel range. Bed comes standard with a rail pendant holder but an optional pendant holder for mounting on the head board is available. The head board pendant holder can be mounted on the resident side of the head board for use when rails are removed from the bed and a location to store the hand control is needed or can be mounted on the back side of the head board for use when you need to hide the hand control away from the resident. 600lb weight capacity, 4 year warranty on electrical and 15 years on the steel frame.

SPECIFICATIONS

OVER-ALL LENGTH - 85.5" for 80" deck and 82" for 76" deck
 DECK HEIGHT LOW POSITION - 7"
 DECK SURFACE - 35"x80" and 35"x76"

OVER-ALL WIDTH (RAILS UP) - 41"
 DECK HEIGHT HIGH POSITION - 30"

ITEM #

- SPFECRIL76HR
- SPFECRIL80HR
- SPFECRILXW80HR
- SPFECFBDCTRL
- SPFN301AL
- SPFN106

DESCRIPTION

- EASYCARE RIL BED, 76" DECK, HEAD SECTION RAILS
- EASYCARE RIL BED, 80" DECK, HEAD SECTION RAILS
- EASYCARE RIL BARIATRIC BED, 80" DECK, 42" WIDTH, HEAD SECTION RAILS
- FOOTBOARD CONTROL OPTION for EASYCARE BED
- 4" BED LENGTH EXTENDER
- PENDANT HOLDER FOR HEAD BOARD (RAIL HOLDER COMES STANDARD)

OPTIONS:



Optional Footboard Control Panel



Optional 4" Bed Length Extender



Optional 42" Expandable Width



Optional Pendant Holder for Head Board

Resident Room

JOERNS EASYCARE RAH ELECTRIC LOW HEIGHT BED



The EasyCare adjustable low height bed has a proven grid-style sleep surface that provides security for resident positioning, air flow around the mattress system and easy to clean openings. The special Toroidal architecture engineering of the bed's steel frame is up to 30 times stronger than standard angle iron. The new UltraLock system is standard and allows the bed to be mobile at any height with an easy operating locking system. Other features include ultra quiet DC motors, baseboard wall bumper; four corner mattress stops, choice of side rail options, laminate head and footboards in a choice of shape and color, 7" to 30" travel range. Bed comes standard with a rail pendant holder but an optional pendant holder for mounting on the headboard is available. The headboard pendant holder can be mounted on the resident side of the headboard for use when rails are removed from the bed and a location to store the hand control is needed or can be mounted on the back side of the headboard for use when you need to hide the hand control away from the resident. 600lb weight capacity. 4 year warranty on electrical and 15 years on the steel frame.

SPECIFICATIONS

OVER-ALL LENGTH - 85.5" for 80" deck and 82" for 76" deck
 DECK HEIGHT LOW POSITION - 7"
 DECK SURFACE - 35"x80" and 35"x76"

OVER-ALL WIDTH (RAILS UP) - 41"
 DECK HEIGHT HIGH POSITION - 30"

ITEM

SPFECRAH76HR
 SPFECRAH80HR
 SPFECRAHXW80HR
 SPFECFBDCTRL
 SPFN301AL
 SPFN106

DESCRIPTION

EASYCARE RAH BED, 76" DECK, HEAD SECTION RAILS
 EASYCARE RAH BED, 80" DECK, HEAD SECTION RAILS
 EASYCARE RAH BARIATRIC BED, 80" DECK, 42" WIDTH, HEAD SECTION RAILS
 FOOTBOARD CONTROL OPTION for EASYCARE BED
 4" BED LENGTH EXTENDER
 PENDANT HOLDER FOR HEAD BOARD (RAIL HOLDER COMES STANDARD)

OPTIONS:



Optional Footboard Control Panel



Optional 4" Bed Length Extender



Optional 42" Expandable Width



Optional Pendant Holder for Head Board



JOERNS ULTRA CARE XT BARIATRIC 42" WIDE ELECTRIC LOW HEIGHT BED



The revolutionary UltraCare® XT is one bed with the ability to adapt to many resident care environments. Through a remarkable combination of performance, function, and style, the UltraCare XT can be easily transformed to fit any configuration or room. The UltraCare XT adjustable low height bed features the special grid-style sleep surface and Toroidal architecture engineering like on the EasyCare series of beds. The new UltraLock system is standard and allows the bed to be mobile at any height with an easy operating locking system. AdvanceCare positioning allows for Comfort Chair and Trendelenburg positioning for extra comfort and better circulation. Bed width extension kits transform the bed in to a 42" wide bed for heavier care. Other features include ultra quiet DC motors, baseboard wall bumper, four corner mattress stops, choice of side rail options, laminate head and footboards in a choice of shape and color, 7" to 30" travel range. 600lb weight capacity. 5 year warranty on electrical and 15 years on the steel frame.

SPECIFICATIONS:

OVER-ALL LENGTH - 85.5"

DECK HEIGHT LOW POSITION - 7"

DECK SURFACE - 42"x80"

OVER-ALL WIDTH (RAILS UP) - 47"

DECK HEIGHT HIGH POSITION - 30"

ITEM #

SPFUCXT4280HR

DESCRIPTION

ULTRACARE XT BARIATRIC 42" WIDE BED, 80" DECK, HEAD SECTION RAILS



Standard AdvanceCare Positioning



Standard Footboard Control Panel



Beds

Resident Room

TRI-FLEX II 1000lb CAPACITY BARIATRIC ELECTRIC BED



The Tri-Flex II 1000lb capacity bed was specifically designed to address bariatric needs of residents weighing up to 1000lbs or needing extra bed width up to 54". The Tri-Flex II beds standard width of 37" can be expanded to 48" or all the way to 54". The bed features Electric Hi-Low, Trendelenberg and Reverse Trendelenberg, Full Head Gatch and Full Knee Gatch positioning. Comes standard with head section rails, head and footboards, CPR release and Battery Back up. Available options are built in digital scale, electric drive system for transporting bed with weight in down the halls, 1000lb capacity foam mattress, foot section rails and 450lb capacity trapeze. The Tri-Flex bed folds to a dimension of 32" wide x 75" high x 47" long so that it can be easily transported through doorways.

SPECIFICATIONS:

DECK PLATFORM - 86" length x 37" width or 48" length x 54" width
OVER-ALL - 94" length x 41" width or 50" length x 63" width

ITEM

SPF63398B
SPF63187
SPF63410
SPF63151
SPF63200
SPF63296B
SPF63153B

DESCRIPTION

TRI-FLEX BED w/HEAD RAILS, BOARDS, BATTERY BACK UP
TRI-FLEX PRESSURE REDUCING MATTRESS 37" TO 48" WIDTH
TRI-FLEX PRESSURE REDUCING MATTRESS 37" TO 54" WIDTH
DIGITAL SCALE OPTION
IMPULSE WHEEL DRIVE SYSTEM
TRAPEZE KIT FOUR CORNER
FOOT SECTION RAILS, ROLL OUT



SPRINGWALL® MOONSTONE® TWIN SIZE BOXSPRING, MATTRESS & FRAME



- Zoned Comfort Pockets in Mattress for Ultimate Comfort
- 1" Bio Foam Topper on Mattress
- Smooth Top, Staftex® Washable Covering
- Low Profile Boxspring Ideal for the Elderly to Keep Bed Height Lower for Getting In & Out of Bed
- Boxspring Dimensions 38.5"W x 74"L x 5"H
- Mattress Dimensions 38.5"W x 74"L x 10"H
- Frame Dimensions 39"W x 74"L x 7"H

ITEM #

SPFMOONSTONE39

SPF39LP

SPFFRA39

DESCRIPTION

Twin Size Mattress 39" Wide x 74" Long

Twin Size Box Spring 39" Wide x 74" Long

Twin Size Metal Frame Support w/ Casters/ Glides

Resident Room

Head & Footboard Choices

STANDARD LAMINATE BOARDS



Avalon



Classical



Traditional

All beds come with the standard laminate boards as pictured. Three different shapes are available (Avalon, Traditional, and Classical). The boards feature easy to clean laminate surfaces, pvc t-mold edging and a variety of colours to choose from.

OPTIONAL WOOD VENEER BOARDS

Upgrade any of the beds to a more elegant and homelike feel with the different wood veneer boards available. All boards are stained to match any of the standard laminates listed and finished with a high end lacquer to protect the product for years to come.

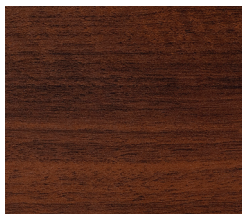


Oakland Wood Veneer
SPFOAKVBD

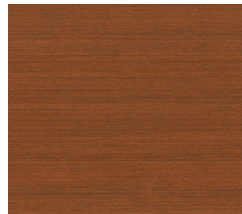


Classics Wood Veneer
SPFCLVBD

STANDARD LAMINATE COLOUR CHOICES



Warm Walnut



Bayou Walnut



Spiced Cherry



Millwork Cherry



Quartered Oak



Natural Maple

Note: Colours shown are limited by printing capabilities. Actual laminate may vary slightly. Contact your sales representative for an actual laminate sample if an exact colour is needed.



HEAD SECTION RAILS (STANDARD - HR)

These rails connect to the head section main frame of the bed and move up and down with the head section whenever it is gatched so they provide safety support at every angle. Top of rail is covered with a vinyl cap for protection against the metal rail. Meets all CSA/FDA bedrail entrapment guidelines.



SOFTCARE SIDE RAILS (OPTIONAL - SR)

Our SoftCare rail has a rubberized coating covering the metal parts of the rail for comfort and protection. Similar to our head section rails, these rails connect to the head section of the bed and move up & down whenever it is gatched. Meets all CSA/FDA bedrail entrapment guidelines.



ASSIST HANDLES (OPTIONAL - AH)

Ergonomically designed to assist residents in and out of bed.



Mattresses



PREVAMATT DELUXE FOAM SUPPORT MATTRESS

The PrevaMatt Deluxe features Visco Memory foam in the sloped heel section and die cut high density foam in the torso and head sections. Incorporates a sloped heel section to redistribute pressure in the delicate heel and lower leg area. Firm perimeter foam provides added stability during resident transfer and helps resident safety by preventing entrapment between mattress and rails. Strategically located cuts in mattress base promotes easier flexing during bed frame articulation which reduces wear and tear on mattress/cover and prolongs mattress life. Easy to clean cover comes standard in four way stretch material for optimum comfort & pressure relief. Available with optional built up side bolsters. Designed for moderate to high risk patients. Meets Canadian flame and fire retardant standards.

SPECIFICATIONS

OVER-ALL LENGTH - 76", 80" or 84"

THICKNESS - 6" (8" with Side Bolsters)

WARRANTY - 7 Years on Core, 2 Years on Cover

OVER-ALL WIDTH - 35"

WEIGHT CAPACITY - 500lbs

ITEM

SPFPREVADX76

SPFPREVADX80

SPFPREVADX84

SPFPREVADX4280

SPFPREVADX76SB

SPFPREVADX80SB

SPFPREVADX84SB

SPFPREVADX4280SB

DESCRIPTION

PREVAMATT DELUXE SUPPORT SURFACE, 35" x 76"

PREVAMATT DELUXE SUPPORT SURFACE, 35" x 80"

PREVAMATT DELUXE SUPPORT SURFACE, 35" x 84"

PREVAMATT DELUXE SUPPORT SURFACE, 42" x 80"

PREVAMATT DELUXE SUPPORT SURFACE w/SIDE BOLSTERS, 35" x 76"

PREVAMATT DELUXE SUPPORT SURFACE w/SIDE BOLSTERS, 35" x 80"

PREVAMATT DELUXE SUPPORT SURFACE w/SIDE BOLSTERS, 35" x 84"

PREVAMATT DELUXE SUPPORT SURFACE w/SIDE BOLSTERS, 42" x 80"



PREVAMATT ELITE FOAM SUPPORT MATTRESS

The PrevaMatt Elite features a full Visco Memory foam topper with cross cut technology to provide superior pressure relief. Incorporates a sloped heel section to redistribute pressure in the delicate heel and lower leg area. Firm perimeter foam provides added stability during resident transfer and helps resident safety by preventing entrapment between mattress and rails. Strategically located cuts in mattress base promotes easier flexing during bed frame articulation which reduces wear and tear on mattress/cover and prolongs mattress life. Easy to clean cover comes standard in four way stretch material for optimum comfort & pressure relief. Available with optional built up side bolsters. Designed for moderate to high risk patients. Meets Canadian flame and fire retardant standards.

SPECIFICATIONS

OVER-ALL LENGTH - 76", 80" or 84"

THICKNESS - 6" (8" with Side Bolsters)

WARRANTY - 7 Years on Core, 2 Years on Cover

OVER-ALL WIDTH - 35"

WEIGHT CAPACITY - 500lbs

ITEM

SPFPREVAEL76

SPFPREVAEL80

SPFPREVAEL84

SPFPREVAEL4280

SPFPREVAEL76SB

SPFPREVAEL80SB

SPFPREVAEL84SB

SPFPREVAEL4280SB

DESCRIPTION

PREVAMATT ELITE SUPPORT SURFACE, 35" x 76"

PREVAMATT ELITE SUPPORT SURFACE, 35" x 80"

PREVAMATT ELITE SUPPORT SURFACE, 35" x 84"

PREVAMATT ELITE SUPPORT SURFACE, 42" x 80"

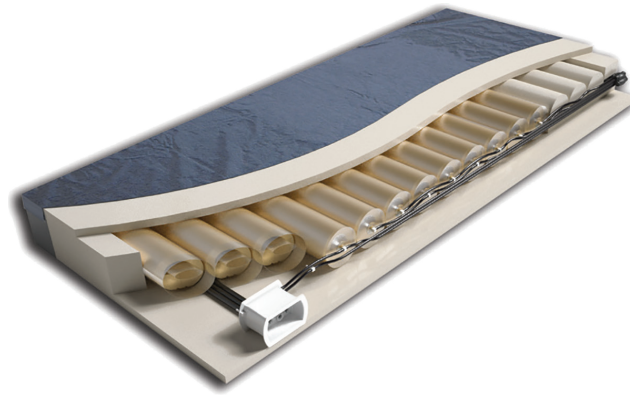
PREVAMATT ELITE SUPPORT SURFACE w/SIDE BOLSTERS, 35" x 76"

PREVAMATT ELITE SUPPORT SURFACE w/SIDE BOLSTERS, 35" x 80"

PREVAMATT ELITE SUPPORT SURFACE w/SIDE BOLSTERS, 35" x 84"

PREVAMATT ELITE SUPPORT SURFACE w/SIDE BOLSTERS, 42" x 80"

Mattresses



P.R.O. MATT® PLUS CONVERTIBLE AIR THERAPY SURFACE

The P.R.O. Matt® Plus is a non-powered mattress replacement system featuring Pressure Redistribution Optimization (P.R.O.) Technology. With the addition of an optional control unit, the mattress provides powered immersion or alternating pressure therapy, allowing the use of one mattress for both pressure ulcer prevention and treatment. The unique P.R.O. Technology design requires no adjustments or manual inflation. The mattress features a sophisticated internal hosing and valve system that is invisible to the caregiver and patient, but enables the surface to automatically adjust to each patient's weight and body profile. In the non-powered mode, the P.R.O. Matt Plus is indicated for prevention through Stage II pressure ulcers. With the addition of an optional control unit and based on individual patient assessment, the P.R.O. Matt Plus can be used for the treatment of uncomplicated Stage III or IV pressure ulcers. Maximum weight capacity 500lbs. Warranty: Five-years, non-prorated; Cover: One-year.

MATTRESS FEATURES AND BENEFITS:

- Four-zone system (head, shoulder, torso and foot) inner air core reproduces the surface pressure profile of a therapeutic low air loss mattress
- One-inch viscoelastic topper enhances pressure redistribution and patient comfort
- Surrounding firm perimeter provides stability during patient care & Patient safety by eliminating gaps between frames and siderails
- Horizontal air tubes are superior to other manufacturers vertical tubes, as they provide better pressure relief & do not kink if bed is gatched
- Self-calibrating design needs no manual inflation
- Recovery-5® stretch cover is standard, waterproof & is a low friction and low shear surface

SPECIFICATIONS:

DIMENSIONS	7.5"w x 12.25"h x 5.5"d
COMFORT SETTINGS	5
CYCLE TIMES	5, 10, 15 Minutes
MODES OF OPERATION	Three - Autofirm, Alternating and Therapy
LOCKOUT	Yes

SPFES2 CONTROL UNIT



ES2 Control Unit

ITEM

SPFPROMATT80
 SPFPROMATT4280
 SPFES2

DESCRIPTION

PROMATT PLUS CONVERTIBLE AIR SURFACE 35" x 80"
 PROMATT PLUS CONVERTIBLE AIR SURFACE 42" X 80"
 ES2 CONTROL UNIT



PRIMA-GEL DELUXE GEL THERAPEUTIC SURFACE

The Prima-Gel Deluxe combines the comfort and pressure reduction of a foam therapeutic surface with the pressure relief and temperature regulation of gel. In this unique process our therapeutic foam core is covered with a 3/4" pillow top gel honeycomb topper in the torso and foot section to deliver unparalleled comfort, temperature control and wound prevention. The gel topper distributes the pressure more evenly over these regions resulting in better pressure interfaces. The honeycomb design of the gel allows for better temperature control around the sensitive pressure areas of the body. The Prima-Gel Deluxe has an incorporated high density foam perimeter to aid in transfers as well as to prevent bed entrapment. The special Recovery-5® Stretch cover provides fluid protection as well as a softer feel and stretch compared to regular nylon covers.

- 3/4" pillow top gel honeycomb comfort topper in torso and foot sections regulates temperature reducing perspiration and provides immersion for pressure reduction as well as increased comfort
- Dual density foam core with sloped heel zone to relieve pressure in sensitive foot region
- Firm perimeter border Allows for easier transfers and a firm supportive edge to meet all bed entrapment guidelines
- Recovery-5® cover ensures protection from fluid while still allowing maximum immersion with its stretch capabilities

SPECIFICATIONS:

OVER-ALL LENGTH - 80"
 THICKNESS - 6"
 WARRANTY - 5 Years

OVER-ALL WIDTH - 35"
 WEIGHT CAPACITY - 500lbs

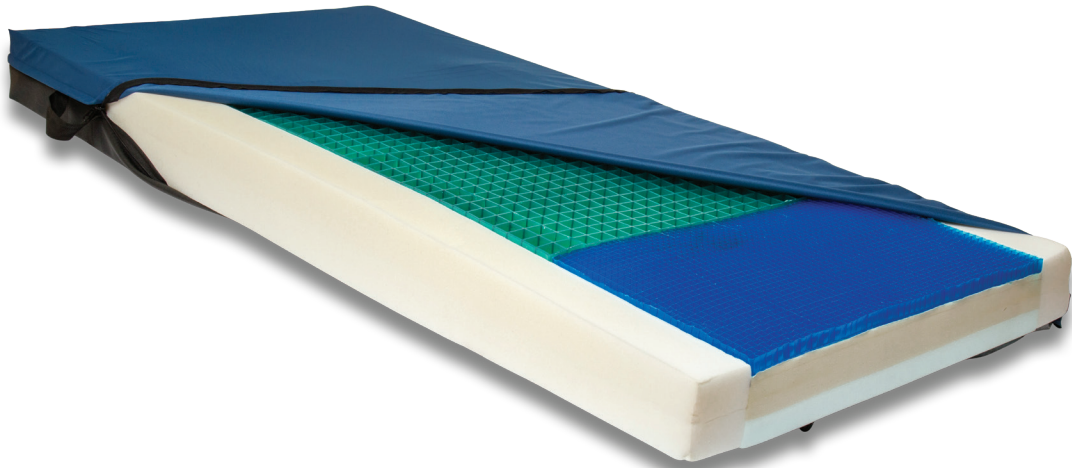
ITEM

SPFPRIMAGDX80

DESCRIPTION

PRIMA-GEL DELUXE GEL THERAPEUTIC SURFACE, 80"

Mattresses



PRIMA-GEL ELITE GEL THERAPEUTIC SURFACE

The Prima-Gel Elite combines the comfort and pressure reduction of a foam therapeutic surface with the pressure relief and temperature regulation of gel. In the critical torso section of the Prima-Gel Elite we incorporate a larger and deeper honeycomb gel design to provide maximum pressure relief and temperature control for Stage I-IV pressure ulcers. The sensitive heel section of the Prima-Gel Elite is covered with a 3/4" pillow top gel honeycomb topper to deliver unparalleled comfort and wound prevention. The gel topper distributes the pressure more evenly over these regions resulting in better pressure interfaces. The honeycomb design of the gel allows for better temperature control around the sensitive pressure areas of the body. The Prima-Gel Elite has an incorporated high density foam perimeter to aid in transfers as well as to prevent bed entrapment. The special Recovery-5® Stretch cover provides fluid protection as well as a softer feel and stretch compared to regular nylon covers.

- Full Torso Section large honeycomb gel pad for maximum pressure relief, comfort and temperature control in critical pressure area of the mattress
- 3/4" pillow top gel honeycomb comfort topper in foot section provides immersion for pressure reduction as well as increased comfort
- Dual density foam core with sloped heel zone to relieve pressure in sensitive foot region
- Firm perimeter border Allows for easier transfers and a firm supportive edge to meet all bed entrapment guidelines
- Recovery-5® cover ensures protection from fluid while still allowing maximum immersion with its stretch capabilities

SPECIFICATIONS:

OVER-ALL LENGTH - 80"
THICKNESS - 6"
WARRANTY - 5 Years

OVER-ALL WIDTH - 35"
WEIGHT CAPACITY - 500lbs

ITEM

SPFPRIMAGEL80

DESCRIPTION

PRIMA-GEL ELITE GEL THERAPEUTIC SURFACE, 80"

Resident Room



EMBASSY SERIES CASEGOODS

The streamlined Embassy Collection embodies the elegant style of cool sophistication with the use of crisp, clean lines throughout the body of the case. Sweeping curves in the base and rounded drawer fronts add to the look and capability of the Embassy Collection to suit almost any décor. Vinyl wrap drawer front and top with laminate panel construction. Backs are vented to allow for air circulation within the cabinets. All cabinets come standard with two front glides and two rear casters. Available in a number of different wood finishes and handle options (see colour choice and options section).

ITEM

SPFEMBC1
 SPFEMBC3
 SPFEMD3
 SPFEMD4
 SPFEMDSK
 SPFEMW2D
 SPFEMW2D1D
 SPFEMW2D2D

DESCRIPTION

EMBASSY VINYL WRAP BEDSIDE CABINET, 1 DRW-1DOOR, 21"w x 18"d x 29"h
 EMBASSY VINYL WRAP BEDSIDE CABINET, 3 DRW, 21"w x 18"d x 29"h
 EMBASSY VINYL WRAP DRESSER, 3 DRW, 28"w x 18"d x 29"h
 EMBASSY VINYL WRAP DRESSER, 4 DRW, 28"w x 18"d x 37"h
 EMBASSY VINYL WRAP DESK, 3 DRW/OPEN SPACE, 48"w x 18"d x 29"h
 EMBASSY VINYL WRAP WARDROBE, 2 DOOR, 38"w x 25"d x 72"h
 EMBASSY VINYL WRAP WARDROBE, 2 DOOR 1 DRW, 38"w x 25"d x 72"h
 EMBASSY VINYL WRAP WARDROBE, 2 DOOR 2 DRW, 38"w x 25"d x 72"h



TRADITIONAL SERIES CASEGOODS

Our Traditional Series uses vinyl wrap construction to create a furniture line that closely resembles real wood but is durable and easy to clean. Raised paneling on door and drawer fronts and detailed edges, imitate the elegance of real wood cabinetry. Our vinyl wrap construction uses a unique thermal fusion process to ensure durability in the long-term care environment. All cabinets come standard with two front glides and two rear casters to make the cabinets easy to level and to manoeuvre. Backs are vented to allow for air circulation within the cabinets. Available in a number of different wood finishes and handle options (see colour choice and options section).

ITEM #	DESCRIPTION
SPFTRDBC1	TRADITIONAL VINYL WRAP BEDSIDE CABINET, 1 DRW-1DOOR, 21"w x 18"d x 29"h
SPFTRDBC3	TRADITIONAL VINYL WRAP BEDSIDE CABINET, 3 DRW, 21"w x 18"d x 29"h
SPFTRDD3	TRADITIONAL VINYL WRAP DRESSER, 3 DRW, 28"w x 18"d x 29"h
SPFTRDD4	TRADITIONAL VINYL WRAP DRESSER, 4 DRW, 28"w x 18"d x 37"h
SPFTRDDSK	TRADITIONAL VINYL WRAP DESK, 3 DRW/OPEN SPACE, 48"w x 18"d x 29"h
SPFTRDW2D	TRADITIONAL VINYL WRAP WARDROBE, 2 DOOR, 38"w x 25"d x 72"h
SPFTRDW2D1D	TRADITIONAL VINYL WRAP WARDROBE, 2 DOOR 1 DRW, 38"w x 25"d x 72"h
SPFTRDW2D2D	TRADITIONAL VINYL WRAP WARDROBE, 2 DOOR 2 DRW, 38"w x 25"d x 72"h





SHAKER SERIES CASEGOODS

Our Shaker Series uses vinyl wrap construction to create a furniture line that closely resembles real wood but is durable and easy to clean. Shaker paneling on door and drawer fronts and detailed edges, imitate the elegance of real wood cabinetry. Our vinyl wrap construction uses a unique thermal fusion process to ensure durability in the long-term care environment. All cabinets come standard with two front glides and two rear casters to make the cabinets easy to level and to manoeuvre. Backs are vented to allow for air circulation within the cabinets. Available in a number of different wood finishes and handle options (see colour choice and options section).

ITEM #	DESCRIPTION
SPFSKBC1	SHAKER VINYL WRAP BEDSIDE CABINET, 1 DRW-1DOOR, 21"w x 18"d x 29"h
SPFSKBC3	SHAKER VINYL WRAP BEDSIDE CABINET, 3 DRW, 21"w x 18"d x 29"h
SPFSKD3	SHAKER VINYL WRAP DRESSER, 3 DRW, 28"w x 18"d x 29"h
SPFSKD4	SHAKER VINYL WRAP DRESSER, 4 DRW, 28"w x 18"d x 37"h
SPFSKDSK	SHAKER VINYL WRAP DESK, 3 DRW/OPEN SPACE, 48"w x 18"d x 29"h
SPFSKW2D	SHAKER VINYL WRAP WARDROBE, 2 DOOR, 38"w x 25"d x 72"h
SPFSKW2D1D	SHAKER VINYL WRAP WARDROBE, 2 DOOR 1 DRW, 38"w x 25"d x 72"h
SPFSKW2D2D	SHAKER VINYL WRAP WARDROBE, 2 DOOR 2 DRW, 38"w x 25"d x 72"h



Casegoods



PRESTIGE SERIES CASEGOODS

The modern Prestige Collection has a lasting design and durability. The metal square tube base not only provides longevity, it adds a brilliant contrast in design. Vinyl wrap drawer front and top with laminate panel construction. Backs are vented to allow for air circulation within the cabinets. Available in a number of different wood finishes and epoxy coating finishes on the metal base.

ITEM #	DESCRIPTION
SPFPRBC1	PRESTIGE VINYL WRAP BEDSIDE CABINET, 1 DRW-1DOOR, 20"w x 20"d x 30"h
SPFPRBC3	PRESTIGE VINYL WRAP BEDSIDE CABINET, 3 DRW, 20"w x 20"d x 30"h
SPFPRD3	PRESTIGE VINYL WRAP DRESSER, 3 DRW, 32"w x 18"d x 27"h
SPFPRD4	PRESTIGE VINYL WRAP DRESSER, 4 DRW, 32"w x 18"d x 35"h
SPFPRW2D	PRESTIGE VINYL WRAP WARDROBE, 2 DOOR, 37"w x 26"d x 72"h
SPFPRW2D1D	PRESTIGE VINYL WRAP WARDROBE, 2 DOOR 1DRW, 37"w x 26"d x 72"h
SPFPRW2D2D	PRESTIGE VINYL WRAP WARDROBE, 2 DOOR 2 DRW, 37"w x 26"d x 72"h



STANDARD COLOUR WOOD GRAIN CHOICES FOR CASEGOODS



Warm Walnut



Bayou Walnut



Spiced Cherry



Millwork Cherry



Oak



Natural Maple

Note: Custom colours are available for all cabinets but have a minimum order level. Contact your sales representative for details and minimum levels needed.

Colours shown are limited by printing capabilities. Actual laminate may vary slightly. Contact your sales representative for an actual laminate sample if an exact colour is needed.

STANDARD HANDLE CHOICES FOR CASEGOODS

All handles are available in nickel finish or brass finish.



D Pull



Transitional Pull



Crescent Pull

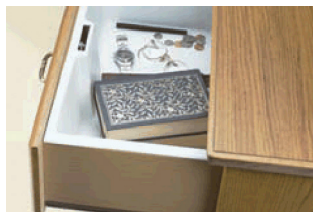


Metal Knob

CASEGOOD OPTIONS



Lock Option
#SPFLOCK



Bedside Drawer Insert Option
#SPFDRWINSERT



Pull out Shelf Option
#SPFPOS

Overbed Tables



STANDARD OVERBED TABLE

Frame is available in brown epoxy (shown) or light beige epoxy. Please specify at time of ordering which colour choice. Adjusts in height from 29.5" to 45". Top Size: 15" x 30".

ITEM #	DESCRIPTION
SPFOBTNM	OVERBED TABLE, STANDARD, NATURAL MAPLE TOP
SPFOBTNO	OVERBED TABLE, STANDARD, NATURAL OAK TOP
SPFOBTMC	OVERBED TABLE, STANDARD, MILLWORK CHERRY TOP
SPFOBTSC	OVERBED TABLE, STANDARD, SPICED CHERRY TOP
SPFOBTW	OVERBED TABLE, STANDARD, WALNUT TOP
SPFOBTCH	OVERBED TABLE, STANDARD, CHESTNUT TOP



SUPER DUTY OVERBED TABLE

A more heavy duty version of the standard overbed table. Supports up to 100lbs. Laminate top overbed table adjusts from 30" to 45" in height. Chrome U base with swivel nylon casters. Top Size: 18" x 32".

ITEM #	DESCRIPTION
SPFOBTSDNM	OVERBED TABLE, SUPER DUTY, NATURAL MAPLE TOP
SPFOBTSDNO	OVERBED TABLE, SUPER DUTY, NATURAL OAK TOP
SPFOBTSDMC	OVERBED TABLE, SUPER DUTY, MILLWORK CHERRY TOP
SPFOBTSDSC	OVERBED TABLE, SUPER DUTY, SPICED CHERRY TOP
SPFOBTSDW	OVERBED TABLE, SUPER DUTY, WALNUT TOP
SPFOBTSDCH	OVERBED TABLE, SUPER DUTY, CHESTNUT TOP

Resident Room Chairs



Resident Room

TUSCAN WOOD FRAME RESIDENT ROOM CHAIR

Solid wood frame with wrap around full upholstery on seat and back.

ITEM #	DESCRIPTION	YARDAGE
SPFTUSCAN	HIGH BACK CHAIR 24"w x 26"d x 41"h x 19"sh	Yrd-2.5



FLORENCE FLEX BACK WOOD FRAME RESIDENT ROOM CHAIR

High back is attached to frame by a strong, flexible metal which provides a slight flex motion to the back for comfort.

ITEM #	DESCRIPTION	YARDAGE
SPFFLORENCE	FLEX BACK CHAIR, High Back 24"w x 26"d x 42"h x 19"sh	Yrd-2



DRAKE WOOD FRAME RESIDENT ROOM CHAIR

High back chair with wood show frame seat and back.

ITEM #	DESCRIPTION	YARDAGE
SPFDRAKE	HIGH BACK CHAIR - SHOW FRAME 24"w x 25"d x 41"h x 19"sh	Yrd-2.5





Resident Room Chairs



O'HARA II FAUX WOODGRAIN METAL RESIDENT ROOM CHAIR

Features peaked corners with an upholstered back and full-wrapped seat platform. Queen Anne-style arms and legs.

ITEM #	DESCRIPTION	YARDAGE
SPFOHARAI	ALUMINUM HIGH BACK CHAIR 23.75"w x 27"d x 40"h x 18.5"sh	Yrd-1.5



WASHINGTON II FAUX WOODGRAIN METAL RESIDENT ROOM CHAIR

Fully upholstered, curved back extends the length of the chair with a wide seat and decorative curved arms.

ITEM #	DESCRIPTION	YARDAGE
SPFWASHINGTONII	ALUMINUM HIGH BACK CHAIR 24.5"w x 27"d x 39.5"h x 19"sh	Yrd-1.85



KENNEDY FAUX WOODGRAIN METAL RESIDENT ROOM CHAIR

Ergonomic back shape fosters a healthy sitting position. Fully upholstered back and thicker, plush seat.

ITEM #	DESCRIPTION	YARDAGE
SPFKENNEDY	ALUMINUM HIGH BACK CHAIR 24"w x 27"d x 42.5"h x 19"sh	Yrd-1.75



WILSON FAUX WOODGRAIN METAL RESIDENT ROOM CHAIR

Fully upholstered back and large, full-wrap seat platform offer ultimate comfort and design.

ITEM #	DESCRIPTION	YARDAGE
SPFWILSON	ALUMINUM HIGH BACK CHAIR 24.5"w x 25.5"d x 35.5"h x 18.5"sh	Yrd-2.65

All Faux Woodgrain Metal Chairs feature a 12 year warranty, weight capacity of 350 lbs, lightweight aluminum frame, and are available in 6 different wood grain finishes, see page 74 for details.

Resident Room Chairs



Resident Room

TRISTAN RESIDENT ROOM CHAIR

Fully upholstered rolled arm with tapered wood legs.

ITEM #	DESCRIPTION	YARDAGE
SPFTRISTAN	HIGH BACK CHAIR 29"w x 31"d x 42"h x 19"sh	Yrd-6



ANTHONY RESIDENT ROOM CHAIR

High back chair with exposed wood front legs and clean out between seat and back.

ITEM #	DESCRIPTION	YARDAGE
SPFANTHONY	HIGH BACK CHAIR 26"w x 27"d x 36"h x 19"sh	Yrd-2.75



FELICIA RESIDENT ROOM CHAIR

High back chair with fully upholstered frame. Tapered wood legs.

ITEM #	DESCRIPTION	YARDAGE
SPFFELICIA	HIGH BACK CHAIR 24"w x 24"d x 41"h x 19"sh	Yrd-3





Dining/Activity Chairs

Seating



TRENTON WOOD ARM CHAIR

ITEM #	DESCRIPTION	YARDAGE
SPFTRENTON	WOOD ARM CHAIR 24"w x 20"d x 35"h x 19.5"sh	Yrd-1
SPFTRENTONC	WOOD ARM CHAIR, 2 FRONT CASTERS 24"w x 20"d x 35"h x 19.5"sh	Yrd-1



BRANT WOOD ARM CHAIR

ITEM #	DESCRIPTION	YARDAGE
SPFBRANT	WOOD ARM CHAIR 24"w x 24.5"d x 40"h x 19"sh	Yrd-1
SPFBRANTC	WOOD ARM CHAIR, 2 FRONT CASTERS 24"w x 24.5"d x 40"h x 19"sh	Yrd-1



BOSTON WOOD ARM CHAIR

ITEM #	DESCRIPTION	YARDAGE
SPFBOSTON	WOOD ARM CHAIR 25"w x 22"d x 37"h x 19"sh	Yrd-1



MILAN WOOD ARM CHAIR

ITEM #	DESCRIPTION	YARDAGE
SPFMILAN	WOOD ARM CHAIR 22.5"w x 22"d x 37.75"h x 18.5"sh	Yrd-1



REGENCY WOOD ARM CHAIR

ITEM #	DESCRIPTION	YARDAGE
SPFREGENCY	WOOD ARM CHAIR 24"w x 24"d x 41.75"h x 20.5"sh	Yrd-1



CAPRI WOOD ARM CHAIR

ITEM #	DESCRIPTION	YARDAGE
SPFCAPRI	CAPRI ARM CHAIR 21"w x 23"d x 40"h x 18.5"sh	Yrd-1





Dining/Activity Chairs



JACKSON STACKING WOOD ARM CHAIR

Stacks 3 High

ITEM #	DESCRIPTION	YARDAGE
SPFJACKSON	STACKING WOOD ARM CHAIR 23"w x 21"d x 33"h x 18"sh	Yrd-1



DOUGLASS STACKING WOOD ARM CHAIR

Stacks 4 High

ITEM #	DESCRIPTION	YARDAGE
SPFDOUGLASS	STACKING WOOD ARM CHAIR 25"w x 23"d x 34.5"h x 19"sh	Yrd-1



VENUS STACKING WOOD ARM CHAIR

Stacks 3 High

ITEM #	DESCRIPTION	YARDAGE
SPFVENUS	STACKING WOOD ARM CHAIR 22.5"w x 19.5"d x 33.5"h x 19"sh	Yrd-1

Seating



LINCOLN FAUX WOODGRAIN METAL DINING CHAIR

Lightweight aluminum frame, easy for Resident to move but sturdy and long-lasting. 6 different wood grain finishes that will not chip even when stacked, see page 74 for options. Stacks 5 high. Industry Leading 12 year warranty. High density moulded foam cushions. Triple umbrella metal, or nylon clear bootied glides. Weight capacity of 350 lbs. Rectangular back with slightly rounded arms.

ITEM #	DESCRIPTION	YARDAGE
SPFLINCOLN	STACKING ALUMINUM ARM CHAIR 23"w x 24.5"d x 39"h x 19.25"sh	Yrd-1.1



MORGAN FAUX WOODGRAIN METAL DINING CHAIR

Lightweight aluminum frame, easy for Resident to move but sturdy and long-lasting. 6 different wood grain finishes that will not chip even when stacked, see page 74 for options. Stacks 5 high. Industry Leading 12 year warranty. High density moulded foam cushions. Triple umbrella metal, or nylon clear bootied glides. Weight capacity of 350 lbs. Rectangular back frame, oval-shaped handgrip, and chamfered edges.

ITEM #	DESCRIPTION	YARDAGE
SPFMORGAN	STACKING ALUMINUM ARM CHAIR 24"w x 24"d x 38.25"h x 18.25"sh	Yrd-1



HUGO FAUX WOODGRAIN METAL DINING CHAIR

Lightweight aluminum frame, easy for Resident to move but sturdy and long-lasting. 6 different wood grain finishes that will not chip even when stacked, see page 74 for options. Stacks 5 high. Industry Leading 12 year warranty. High density moulded foam cushions. Triple umbrella metal, or nylon clear bootied glides. Weight capacity of 350 lbs. Features a narrower cushioned seat at the rear to perfectly stack for easy storage.

ITEM #	DESCRIPTION	YARDAGE
SPFHUGO	STACKING ALUMINUM ARM CHAIR 24"w x 26"d x 38"h x 18.5"sh	Yrd-1.2



Dining/Activity Chairs



Seating



LINCOLN FAUX WOODGRAIN METAL DINING CHAIR

Lightweight aluminum frame, easy for Resident to move but sturdy and long-lasting. 6 different wood grain finishes that will not chip even when stacked, see page 74 for options. Stacks 5 high. Industry Leading 12 year warranty. High density moulded foam cushions. Triple umbrella metal, or nylon clear booting glides. Weight capacity of 350 lbs. Rectangular back with slightly rounded arms.

ITEM #	DESCRIPTION	YARDAGE
SPFLINCOLN	STACKING ALUMINUM ARM CHAIR	Yrd-1.1
	23"w x 24.5"d x 39"h x 19.25"sh	



WINCHESTER FAUX WOODGRAIN METAL DINING CHAIR

Lightweight aluminum frame, easy for Resident to move but sturdy and long-lasting. 6 different wood grain finishes that will not chip even when stacked, see page 74 for options. Stacks 5 high. Industry Leading 12 year warranty. High density moulded foam cushions. Triple umbrella metal, or nylon clear booting glides. Weight capacity of 350 lbs. Softened corner angles and chamfered edges.

ITEM #	DESCRIPTION	YARDAGE
SPFWINCHESTER	STACKING ALUMINUM ARM CHAIR	Yrd-1
	23"w x 24"d x 39.5"h x 18"sh	



ASTORIA FAUX WOODGRAIN METAL DINING CHAIR

Lightweight aluminum frame, easy for Resident to move but sturdy and long-lasting. 6 different wood grain finishes that will not chip even when stacked, see page 74 for options. Stacks 5 high. Industry Leading 12 year warranty. High density moulded foam cushions. Triple umbrella metal, or nylon clear booting glides. Weight capacity of 350 lbs. Aluminum framed oval back.

ITEM #	DESCRIPTION	YARDAGE
SPFASTORIA	STACKING ALUMINUM ARM CHAIR	Yrd-1
	23.75"w x 23.5"d x 37.5"h x 18.5"sh	



MERCURY STACKING ARM CHAIR

Traditional steel frame stacking chair with nylon flared arms. Frame is available in the standard black epoxy finish to match the arms. Stacks 5 high.

ITEM #	DESCRIPTION	YARDAGE
SPFMERCURY	STACKING ARM CHAIR 23"w x 22"d x 32.5"h x 18"sh	Yrd-.75



APOLLO STACKING ARM CHAIR, HIGH BACK

High back version of the Mercury series chair. Stacks 5 high

ITEM #	DESCRIPTION	YARDAGE
SPFAPOLLO	STACKING ARM CHAIR 23"w x 22"d x 35"h x 18"sh	Yrd-1



ECONOMY STACKING ARM CHAIR

Economical, steel frame stacking chair with nylon arm caps. Frame is available in a chrome finish or black epoxy. Stacks 10 high.

ITEM #	DESCRIPTION	YARDAGE
SPFXL101	STACKING ARM CHAIR 21"w x 22"d x 33"h x 18"sh	Yrd-0.75



Bistro / Café Chairs



TIFFANY BISTRO/CAFÉ CHAIR

Wood frame café chair with solid wood curved panel back. Available with or without arms.

ITEM #	DESCRIPTION	YARDAGE
SPFTIFFANY	ARMLESS 17.5"w x 17"d x 35"h x 19"sh	Yrd-0.5
SPFTIFFANY/1	WITH ARMS 22"w x 17"d x 35"h x 19"sh	Yrd-0.5



SIL190 BISTRO/CAFÉ CHAIR

Wood frame café chair with vertical wood slat back. Available with or without arms.

ITEM #	DESCRIPTION	YARDAGE
SPFSIL190PS	ARMLESS 18"w x 17"d x 35"h x 19"sh	Yrd-0.5
SPFSIL190PS/1	WITH ARMS 22"w x 18"d x 35"h x 19"sh	Yrd-0.5



EPOCA BISTRO/CAFÉ CHAIR

Wood frame café chair with decorative curved wood panel back. Available with or without arms.

ITEM #	DESCRIPTION	YARDAGE
SPFEPOCA	ARMLESS 18"w x 17"d x 35"h x 19"sh	Yrd-0.5
SPFEPOCA/1	WITH ARMS 22"w x 17"d x 35"h x 19"sh	Yrd-0.5



OCCASIONAL ARM CHAIR

Fully upholstered chair with tapered wood legs.

ITEM #	DESCRIPTION	YARDAGE
SPF2977	LOUNGE CHAIR 26"w x 31"d x 34"h x 18"sh	Yrd-6



FINCH WINGBACK CHAIR

Fully upholstered chair with side wings and tapered wood legs.

ITEM #	DESCRIPTION	YARDAGE
SPFFINCH	LOUNGE CHAIR 29"w x 34"d x 39"h x 19"sh	Yrd-6



WINGBACK CHAIR

Fully upholstered chair with Queen Anne or tapered wood legs.

ITEM #	DESCRIPTION	YARDAGE
SPF603	LOUNGE CHAIR, TAPERED LEGS 30"w x 30"d x 38"h x 19"sh	Yrd-5
SPF602	LOUNGE CHAIR, QUEEN ANNE LEGS 30"w x 30"d x 38"h x 19"sh	Yrd-5
SPF6030T	OTTOMAN, TAPERED LEG 25"w x 22"d x 18"h	Yrd-2
SPF6020T	OTTOMAN, QUEEN ANNE 25"w x 22"d x 18"h	Yrd-2





Lounge Chairs

Seating



OCCASIONAL ARM CHAIR

Fully upholstered high back chair with tapered wood legs.

ITEM #	DESCRIPTION	YARDAGE
SPF2791	LOUNGE CHAIR 35"w x 35"d x 38"h x 19"sh	Yrd-6



OCCASIONAL ARM CHAIR

Fully upholstered rolled arm with tapered wood legs.

ITEM #	DESCRIPTION	YARDAGE
SPFTRISTAN	LOUNGE CHAIR 30"w x 31"d x 42"h x 19"sh	Yrd-6



OCCASIONAL ARM CHAIR

Fully upholstered chair with tapered wood legs.

ITEM #	DESCRIPTION	YARDAGE
SPF2920	LOUNGE CHAIR 28"w x 33"d x 35"h x 20"sh	Yrd-6



OCCASIONAL ARM CHAIR

Fully upholstered with tapered wood legs.

ITEM #	DESCRIPTION
SPF2301C	LOUNGE CHAIR 29"w x 32"d x 32"h x 20"sh

YARDAGE
Yrd-6



OCCASIONAL ARM CHAIR

Fully upholstered chair with angle block legs.

ITEM #	DESCRIPTION
SPF2118	LOUNGE CHAIR 34.5"w x 34"d x 35"h x 19"sh

YARDAGE
Yrd-5.5



TUB CHAIR

Fully upholstered with wood block legs.

ITEM #	DESCRIPTION
SPF2318	LOUNGE CHAIR 28"w x 26"d x 29"h x 19"sh

YARDAGE
Yrd-4





Lounge Chairs



BUTTERFLY ARM CHAIR

Features removable seat cushions with a cleanout opening at the back for easy cleaning and incontinent control.

ITEM #	DESCRIPTION	YARDAGE
SPFBTFLC	ARM CHAIR 34.5"w x 30"d x 36"h x 18"sh	Yrd-5



FELICIA RESIDENT ROOM CHAIR

High back chair with fully upholstered frame. Tapered wood legs.

ITEM #	DESCRIPTION	YARDAGE
SPFFELICIA	HIGH BACK CHAIR 24"w x 24"d x 41"h x 19"sh	Yrd-3



SWAN ARM CHAIR

ITEM #	DESCRIPTION	YARDAGE
SPFSWAN	ARM CHAIR 24.5"w x 22"d x 35"h x 18"sh	Yrd-2.75



TUSCAN HIGH BACK CHAIR

ITEM #	DESCRIPTION	YARDAGE
SPFTUSCAN	HIGH BACK CHAIR 24"w x 26"d x 41"h x 19"sh	Yrd-2.5



ANTHONY HIGH BACK CHAIR

High back chair with exposed wood front legs and clean out between seat and back.

ITEM #	DESCRIPTION	YARDAGE
SPFANTHONY	ARM CHAIR, HIGH BACK 26"w x 27"d x 36"h x 19"sh	Yrd-2.75



CLEOPATRA CHAIR

Low back chair with exposed wood front legs and clean out between seat and back.

ITEM #	DESCRIPTION	YARDAGE
SPFCLEO	ARM CHAIR 26"w x 27"d x 32"h x 19"sh	Yrd-2.5





Lounge Groupings

Seating



TRILLIUM CHIPPENDALE LEG LOUNGE FURNITURE

This series is designed for use in the Long Term Care environment on care floors with heavier care. All Trillium chairs, loveseats and sofas feature removable seat cushions with a cleanout opening at the back for easy cleaning and incontinent control.

ITEM #	DESCRIPTION	YARDAGE
SPFTRCPWB	Wingback Chair, Chippendale Legs 30"w x 26"d x 42"h x 18"sh	Yrd-5.5
SPFTRCPLC	Lounge Chair, Chippendale Legs 33.5"w x 27.5"d x 35"h x 18"sh	Yrd-5
SPFTRCPLV	Loveseat, Chippendale Legs 58"w x 27.5"d x 35"h x 18"sh	Yrd-7
SPFTRCPS	Sofa, Chippendale Legs 71"w x 27.5"d x 35"h x 18"sh	Yrd-9.5



TRILLIUM TAPERED LEG LOUNGE FURNITURE

This series is designed for use in the Long Term Care environment on care floors with heavier care. All Trillium chairs, loveseats and sofas feature removable seat cushions with a cleanout opening at the back for easy cleaning and incontinent control.

ITEM #	DESCRIPTION	YARDAGE
SPFTRTPWB	Wingback Chair, Tapered Legs 30"w x 26"d x 42"h x 18"sh	Yrd-5.5
SPFTRTPLC	Lounge Chair, Tapered Legs 33.5"w x 27.5"d x 35"h x 18"sh	Yrd-5
SPFTRTPLV	Loveseat, Tapered Legs 58"w x 27.5"d x 35"h x 18"sh	Yrd-7
SPFTRTPS	Sofa, Tapered Legs 71"w x 27.5"d x 35"h x 18"sh	Yrd-9.5



TRILLIUM QUEEN ANNE LEG LOUNGE FURNITURE

This series is designed for use in the Long Term Care environment on care floors with heavier care. All Trillium chairs, loveseats and sofas feature removable seat cushions with a cleanout opening at the back for easy cleaning and incontinent control.

ITEM #	DESCRIPTION	YARDAGE
SPFTRQAWB	Wingback Chair, Queen Anne Legs 30"w x 26"d x 42"h x 18"sh	Yrd-5.5
SPFTRQALC	Lounge Chair, Queen Anne Legs 33.5"w x 27.5"d x 35"h x 18"sh	Yrd-5
SPFTRQALV	Loveseat, Queen Anne Legs 58"w x 27.5"d x 35"h x 18"sh	Yrd-7
SPFTRQAS	Sofa, Queen Anne Legs 71"w x 27.5"d x 35"h x 18"sh	Yrd-9.5



BUTTERFLY SERIES LOUNGE FURNITURE

The Butterfly series features removable seat cushions with a cleanout opening at the back for easy cleaning and incontinent control. Series is designed for use in the Long Term Care environment on care floors with heavier care.

ITEM #	DESCRIPTION	YARDAGE
SPFBTFLC	Lounge Chair 34.5"w x 30"d x 36"h x 18"sh	Yrd-5
SPFBTFLV	Loveseat 58"w x 30"d x 36"h x 18"sh	Yrd-7



BURKE SERIES LOUNGE FURNITURE

The Burke series features removable seat cushions with a cleanout opening at the back for easy cleaning and incontinent control. Series is designed for use in the Long Term Care environment on care floors with heavier care.

ITEM #	DESCRIPTION	YARDAGE
SPFBURKE-LC	Lounge Chair 34.5"w x 35"d x 36.5"h x 19"sh	Yrd-6
SPFBURKE-LV	Loveseat 60"w x 35"d x 36.5"h x 19"sh	Yrd-8.5
SPFBURKE-S	Sofa 83"w x 35"d x 36.5"h x 19"sh	Yrd-11



PARIS SERIES LOUNGE FURNITURE

The Paris series features removable seat cushions with a cleanout opening at the back for easy cleaning and incontinent control. Series is designed for use in the Long Term Care environment on care floors with heavier care.

ITEM #	DESCRIPTION	YARDAGE
SPF2112	Lounge Chair 29"w x 32"d x 38"h x 19"sh	Yrd-5
SPF3112	Loveseat 53"w x 32"d x 38"h x 19"sh	Yrd-6



Lounge Groupings



2851 RESIDENTIAL CARE LOUNGE SEATING

The residential Care line of seating products is available in a number of different styles and configurations. All products feature Healthcare quality foam and are suited for lighter care areas or lobby/entry lounges where incontinence isn't a big concern. Ideal for all Retirement home lounge applications.

ITEM #	DESCRIPTION	YARDAGE
SPF2851C	LOUNGE CHAIR 39"w x 36"d x 36"h x 18"sh	Yrd-10
SPF2851L	LOVESEAT 61"w x 36"d x 36"h x 18"sh	Yrd-17
SPF2851	SOFA 83"w x 36"d x 36"h x 18"sh	Yrd-19
SPF2851SB	SOFA BED 83"w x 36"d x 36"h x 18"sh	Yrd-19



2538 RESIDENTIAL CARE LOUNGE SEATING

The residential Care line of seating products is available in a number of different styles and configurations. All products feature Healthcare quality foam and are suited for lighter care areas or lobby/entry lounges where incontinence isn't a big concern. Ideal for all Retirement home lounge applications.

ITEM #	DESCRIPTION	YARDAGE
SPF2538C	LOUNGE CHAIR 40"w x 39"d x 40"h x 19"sh	Yrd-6
SPF2538L	LOVESEAT 61"w x 39"d x 40"h x 19"sh	Yrd-11
SPF2538	SOFA 85"w x 39"d x 40"h x 19"sh	Yrd-13.5



2301 RESIDENTIAL CARE LOUNGE SEATING

The residential Care line of seating products is available in a number of different styles and configurations. All products feature Healthcare quality foam and are suited for lighter care areas or lobby/entry lounges where incontinence isn't a big concern. Ideal for all Retirement home lounge applications.

ITEM #	DESCRIPTION	YARDAGE
SPF2301C	LOUNGE CHAIR 29"w x 32"d x 32"h x 20"sh	Yrd-6
SPF2301L	LOVESEAT 62"w x 32"d x 32"h x 20"sh	Yrd-10
SPF2301	SOFA 76"w x 32"d x 32"h x 20"sh	Yrd-11
SPF2301SB	SOFA BED 76"w x 32"d x 32"h x 20"sh	Yrd-11



2560 RESIDENTIAL CARE LOUNGE SEATING

The residential Care line of seating products is available in a number of different styles and configurations. All products feature Healthcare quality foam and are suited for lighter care areas or lobby/entry lounges where incontinence isn't a big concern. Ideal for all Retirement home lounge applications



ITEM #	DESCRIPTION	YARDAGE
SPF2560C	LOUNGE CHAIR 39"w x 37"d x 36"h x 19"sh	Yrd-8
SPF2560L	LOVESEAT 64"w x 37"d x 36"h x 19"sh	Yrd-11
SPF2560	SOFA 86"w x 37"d x 36"h x 19"sh	Yrd-13.5

EMERY RESIDENTIAL CARE LOUNGE SEATING

The residential Care line of seating products is available in a number of different styles and configurations. All products feature Healthcare quality foam and are suited for lighter care areas or lobby/entry lounges where incontinence isn't a big concern. Ideal for all Retirement home lounge applications.



ITEM #	DESCRIPTION	YARDAGE
SPFEMERYC	LOUNGE CHAIR 37"w x 37"d x 35"h x 18"sh	Yrd-8
SPFEMERYL	LOVESEAT 61"w x 37"d x 35"h x 18"sh	Yrd-15
SPFEMERY	SOFA 85"w x 37"d x 35"h x 18"sh	Yrd-17

MADISON RESIDENTIAL CARE LOUNGE SEATING

The residential Care line of seating products is available in a number of different styles and configurations. All products feature Healthcare quality foam and are suited for lighter care areas or lobby/entry lounges where incontinence isn't a big concern. Ideal for all Retirement home lounge applications.



ITEM #	DESCRIPTION	YARDAGE
SPFMADISONC	LOUNGE CHAIR 35"w x 35"d x 33"h x 18"sh	Yrd-7
SPFMADISONL	LOVESEAT 58"w x 35"d x 33"h x 18"sh	Yrd-11
SPFMADISON	SOFA 82"w x 35"d x 33"h x 18"sh	Yrd-13
SPFMADISONSB	SOFA BED 82"w x 35"d x 33"h x 18"sh	Yrd-13

Recliners / Rockers / Gliders / Sleep Chairs



LA-Z-BOY® RÊMA RECLINERS

This recliner is available in a stationary version, rocker/recliner version or a mobile, 4 locking caster version. Comes standard with fully upholstered arms and upgrades to black urethane arm caps or optional wood arm caps in a variety of finishes are available.

ITEM #	DESCRIPTION	YARDAGE
SPFR1304	RECLINER, STATIONARY 33"w x 37"d x 40"h x 18.5"sh	Yrd-5
SPFR1125	ROCKER/RECLINER, STATIONARY 35"w x 36.5"d x 43"h x 18.5"sh	Yrd-6
SPFR1117	RECLINER, MOBILE 34"w x 38"d x 47"h x 21.5"sh	Yrd-6.5
SPF-U	BLACK URETHANE ARM CAP OPTION	
SPF-WA	WOOD ARM CAP OPTION	



Shown with urethane arm cap upgrade

LA-Z-BOY® SLEEP CHAIR

This chair folds out and reclines in to a flat bed. Comes standard with four locking casters for easy mobility from room to room. Chair comes standard with fully upholstered arms and upgrades to black urethane arm caps or wood arm caps in a variety of stain finishes are available. The SPFR1700 has a 26" width sleep surface and the SPFR1800 has a 30" width sleep surface. 600lb weight capacity.

ITEM #	DESCRIPTION	YARDAGE
SPFR1700	SLEEP CHAIR - 26" BED WIDTH 33"w x 34.25"d x 34.5"h x 21"sh	Yrd-7
SPFR1800	SLEEP CHAIR - 30" BED WIDTH 37"w x 34.25"d x 34.5"h x 21"sh	Yrd-9
SPF-U	BLACK URETHANE ARM CAP UPGRADE	
SPF-WA	WOOD ARM CAP UPGRADE	

Recliners / Rockers / Gliders / Sleep Chairs



WINGBACK RECLINER

Tapered legs.

ITEM #	DESCRIPTION	YARDAGE
SPF2509	WINGBACK RECLINER 31"w x 33"d x 41"h x 18"sh	Yrd-7



GLIDER/ROCKER CHAIR

Gentle gliding motion on a safe, comfortable seating platform.

ITEM #	DESCRIPTION	YARDAGE
SPF2804	GLIDER/ROCKER CHAIR 32"w x 30"d x 38"h x 19"sh	Yrd-5.5



ELECTRIC LIFT & RECLINE CHAIR

Electric lift and recline chair will gently support and lift the resident to a standing position as well as electrically recline to infinite positions for superior comfort. Chair is a two motor system and of superior quality compared to "import" models. Available with optional heat and massage option. Comes standard in Mocha, Parchment, Blue Ridge, Dusty Jade or Burgundy vinyl. Other vinyl colours and Cryptons available at an upcharge.

ITEM #	DESCRIPTION	YARDAGE
SPFC0552LR	LIFT & RECLINE CHAIR 33.5"w x 35"d x 39"h x 18"sh	Yrd-6
SPFC0552LRHM	LIFT/RECLINE/HEAT/MASSAGE CHAIR 33.5"w x 35"d x 39"h x 18"sh	Yrd-6



Seating

Benches



BENCH

Bench has tapered legs with fully padded and upholstery wrapped seat.

ITEM #	DESCRIPTION	YARDAGE
SPF2598	BENCH, TAPERED LEGS 48"w x 18"d x 18"h	Yrd-3



DRAKE BENCH

ITEM #	DESCRIPTION	YARDAGE
SPFDRAKE-WB	BENCH, FLARED ARMS, WITH BACK 53"w x 19"d x 28.75"h x 18"sh	Yrd-7
SPFDRAKE-B	BENCH, FLARED ARMS, NO BACK 53"w x 19"d x 26"h x 18"sh	Yrd-4



ROLLED ARM BENCH

Bench has tapered legs with rolled top arms on both sides.

ITEM #	DESCRIPTION	YARDAGE
SPF2597	BENCH, TAPERED LEGS 52"w x 20"d x 29"h x 18"sh	Yrd-4





FAUX WOODGRAIN METAL BARIATRIC DINING CHAIR

Lightweight aluminum frame, easy for Resident to move but sturdy and long-lasting. 8 different wood grain finishes that will not chip even when stacked, see page 67 for options. Stacks 5 high. Industry Leading 12 year warranty. High density moulded foam cushions. Triple umbrella metal, or nylon clear bootied glides. Weight capacity of 500 lbs. Elongated upholstered back and deluxe padding.



ITEM #	DESCRIPTION	YARDAGE
SPFRANDOLPH	STACKING BARIATRIC DINING CHAIR	Yrd-1.5
	30"w x 27.5"d x 39"h x 19.25"sh	

WOOD FRAME BARIATRIC DINING ROOM CHAIR

Solid wood chair with an extra wide seat width and weight capacity of 450lbs.



ITEM #	DESCRIPTION	YARDAGE
SPF1186	BARIATRIC DINING ROOM CHAIR	Yrd-3
	33"w x 21"d x 33"h x 18"sh	

WOOD FRAME BARIATRIC RESIDENT ROOM CHAIR

Solid wood chair with an extra wide seat width and weight capacity of 500lbs.



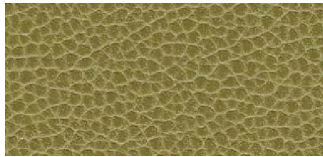
ITEM #	DESCRIPTION	YARDAGE
SPF4177	BARIATRIC RESIDENT ROOM CHAIR	Yrd-3.5
	32"w x 30"d x 44"h x 20"sh	

BARIATRIC LOUNGE CHAIR

Fully upholstered chair with an extra wide seat width and weight capacity of 500lbs.



ITEM #	DESCRIPTION	YARDAGE
SPF4102	BARIATRIC LOUNGE CHAIR	Yrd-8.5
	50"w x 37"d x 31"h x 18.5"sh	



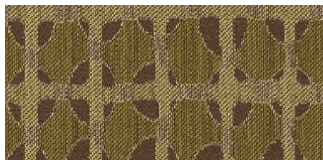
VINYL UPHOLSTERY COVERINGS

A variety of different vinyl upholstery coverings are available to choose from. Vinyl provides ease of cleaning with new “textured” and patterned looks. Choose from major manufacturer’s patterns and colours such as Douglass, Morbern and Momentum. Vinyls meet all flame and fire retardency standards. Contact your sales representative for available patterns and colours to choose from.



PRINTED CRYPTON UPHOLSTERY COVERINGS

A variety of different patterns and colours are available and printed on to a Crypton base cloth. Crypton’s® patented technology is engineered into the fabric, encapsulating every fibre with stain, odour, and bacteria resistance. The breathable moisture barrier is permanently integrated into the fabric, ensuring a complete and proven performance system from the fibres up. Contact your sales representative for available patterns and colours to choose from.



WOVEN CRYPTON UPHOLSTERY COVERINGS

A wide variety of woven textile patterns and colours are available in two different grade/price levels. Crypton’s® patented technology is engineered into the fabric, encapsulating every fibre with stain, odour, and bacteria resistance. The breathable moisture barrier is permanently integrated into the fabric, ensuring a complete and proven performance system from the fibres up. Choose from major manufacturer’s patterns and colours such as Coral, Douglass and Momentum. Woven Cryptons meet all flame and fire retardency standards. Contact your sales representative for available patterns and colours to choose from.



Vinyls, Woven Cryptons
www.dougind.com



MOMENTUM GROUP

Vinyls, Woven Cryptons
www.themomgroup.com/momtex.html



Vinyls, Printed Cryptons, Woven Cryptons
www.coralfabrics.com



Vinyls, Woven Cryptons
www.jennisfabrics.com

Morbern

Mor-Care Vinyls
www.morbern.com

Glide and Caster Options



NYLON GLIDES

Nylon glides are the standard glide if no glide is specified. They work well on all types of surfaces.



METAL GLIDES

Metal glides are for use on carpeted surfaces only.



FELT GLIDES

Felt glides are for use on vinyl or ceramic surfaces and eliminate the vibration noise that occurs when using regular glides. Do not use on carpeted surfaces. Felt does wear out quicker than nylon so the glides do need to be replaced more often.



FRONT CASTER OPTION

Casters are available for most wood frame chairs (see seating pages for exact models they are available on.) The casters are installed on the two front legs and regular glides are used on the back legs. Chair is still stable when someone is sitting in it but is a lot easier to move when there is no weight on the legs.



WILSON



WINSTON



TORCHIERE

ELECTRIC FIREPLACES

Variety of different mantel styles to fit every decor. Each fireplace features patented flame technology for an incredible realistic flame effect, remote control to turn unit on and off and fan forced heater with thermostat control for comfortable heating (can operate with or without heat). Units are cost effective (approx 3 cents/hour) and plug in to a regular electrical outlet.

ITEM

DESCRIPTION

SPFGDS26L5-1803RO	WILSON, OAK FINISH, 50 7/8" w x 13 1/4" d x 42" h, 1500 Watts, 5118 BTU's
SPFDFF261109W	WINSTON, WHITE FINISH, 52 3/8" w x 14 1/16" d x 42 3/16" h, 1440 Watts, 4915 BTU's
SPFSEPBW4217FB	TORCHIERE, WALNUT FINISH, 63 5/8" w x 21" d x 49 1/8" h, 1500 Watts, 5120 BTU's
SPFGDS30-1086W	ESSEX, WHITE FINISH, 54 7/8" w x 18 1/8" d x 48 1/8" h, 1500 Watts, 5120 BTU's
SPFGDS26-1152LR	FEATHERSTON, NATURAL STONE, 61" w x 16" d x 44" h, 1440 Watts, 4915 BTU's
SPFDFF4765BW	HOLBROOK, WALNUT FINISH, 44" w x 16 1/2" d x 43" h, 1375 Watts, 4695 BTU's

MORE STYLES ARE AVAILABLE, PLEASE CHECK THE MANUFACTURER'S WEBSITE FOR THE LATEST UP TO DATE SELECTIONS

www.dimplex.com/en/electric_fireplaces/mantels/products



ESSEX



FEATHERSTON



HOLBROOK



Lighting

From Common area table lamps, Floor lamps, hallway wall sconces, bathroom fixtures to bedside table lamps, there are numerous styles to choose from. Custom fixtures can also be manufactured based on minimum order quantities of 50 to 100 depending on the item style. The models listed below are a small sampling of some of the more popular stock products. There are numerous other styles and colours available. Please contact your Specialty Furniture representative to view a complete catalogue of lighting selections.

FLOOR LAMPS



#SPFC1657



#SPFFRL81006



#SPFC1079



TABLE LAMPS



#SPFNS81006



#SPF2384



#SPFC2657



#SPF24730B



#SPFC2551



#SPFTA2701



#SPFC2461



#SPFC2079



#SPFC2480M

Accessories



Occasional Tables



SHAKER OCCASIONAL TABLES

The Shaker series of occasional tables is available in a number of different shapes and sizes. All tables feature a traditional routed solid wood edge, apron, and legs. Tops are high pressure laminate top surfaces. End Tables are available in any of our standard wood finishes.

ITEM

SPF8150-14
SPF8150-13
SPF8150-15

DESCRIPTION

SHAKER END TABLE, 22"w x 26"d x 22"h
SHAKER COFFEE TABLE, 42"w x 22"d x 17"h
SHAKER SOFA TABLE, 50"w x 16"d x 28 ¼"h

Tables



CHIPPENDALE LEG OCCASIONAL TABLES

The Chippendale series of occasional tables is available in a number of different shapes and sizes. All tables feature a traditional routed solid wood edge, apron, and legs. Tops are high pressure laminate top surfaces. End Tables are available in any of our standard wood finishes.

ITEM

SPFTLE12

SPFTLC13

SPFTLS14

DESCRIPTION

CHIPPENDALE END TABLE, 22"w x 26"d x 22"h

CHIPPENDALE COFFEE TABLE, 42"w x 22"d x 17"h

CHIPPENDALE SOFA TABLE, 50"w x 16"d x 29"h



METROPOLITAN OCCASIONAL TABLES

The Metropolitan series of occasional tables is available in a number of different shapes and sizes. All tables feature a traditional routed solid wood edge, apron, and legs. Tops are high pressure laminate top surfaces. End Tables are available in any of our standard wood finishes.

ITEM

SPFMP25R

SPFMP25

SPFMP35

DESCRIPTION

METROPOLITAN END TABLE, ROUND, 18" diameter x 23"h

METROPOLITAN END TABLE, RECTANGULAR, 22"w x 27"d x 23"h

METROPOLITAN COFFEE TABLE, 34"w x 20"d x 16"h



Occasional Tables



COUNTRY FRENCH OCCASIONAL TABLES

The Country French series of occasional tables is available in a number of different shapes and sizes. All tables feature a traditional routed solid wood edge, apron, and legs. Tops are high pressure laminate top surfaces. End Tables are available in any of our standard wood finishes.

ITEM

SPFTE52
SPFTC53
SPFTE54

DESCRIPTION

COUNTRY FRENCH END TABLE, 20" w x 24" d x 22" h
COUNTRY FRENCH COFFEE TABLE, 36" w x 22" d x 17" h
COUNTRY FRENCH SOFA TABLE, 50" w x 16" d x 30" h



CARNEGIE HILL OCCASIONAL TABLES

The Carnegie Hill series of occasional tables is available in a number of different shapes and sizes. All tables feature a traditional routed solid wood edge, apron, and legs. Tops are high pressure laminate top surfaces. End Tables are available in any of our standard wood finishes.

ITEM

SPFCH25R
SPFCH25
SPFCH35

DESCRIPTION

CARNEGIE HILL END TABLE, ROUND, 18" diameter x 22" h
CARNEGIE HILL END TABLE, RECTANGULAR, 22" w x 27" d x 22" h
CARNEGIE HILL COFFEE TABLE, 34" w x 20" d x 16.5" h



#100 METAL PEDESTAL TABLE BASE

The #100 metal pedestal base features 14 gauge tubular steel, adjustable glides, bullet shape end caps and a top mounting plate. Standard height is 28" but custom heights are available if specified. Available in any of our standard epoxy colours or in a polished chrome finish (upcharge). Base spreads are 23" (24" square top or 30" or smaller round top), 28" (30" to 36" square or round tops), 32" (38" to 42" square or round tops) and 36" (44" to 48" square or round top).



#102 METAL PEDESTAL TABLE BASE

The #102 metal pedestal base (2/set) features 14 gauge tubular steel, adjustable glides, bullet shape end caps and a top mounting plate. Standard height is 28" but custom heights are available if specified. Available in any of our standard epoxy colours or in a polished chrome finish (upcharge). Leg spread is 28" and set of two can be used on top 30" to 36" wide and up to 96" long.



#108 METAL ADJ HEIGHT PEDESTAL TABLE BASE

The #108 metal pedestal base features 14 gauge tubular steel, adjustable glides, bullet shape end caps and a top mounting plate. Height adjusts in 1" increments from 26" to 34" high. Available in any of our standard epoxy colours or in a polished chrome finish (upcharge). Base spreads are 28" (30" to 36" square or round tops), 32" (38" to 42" square or round tops) and 36" (44" to 48" square or round top).



TABLE CODE NUMBER FORMULA

SPF + 100 + FT + 4242 + PV = SPF100FT4242PV
 Prefix Base # Options Top Size Edge Type Table Code #

Pedestal Bases



Tables



2000 SERIES CAST IRON TABLE BASE

Cast Iron X base provides an economical but sturdy table base for tops of all sizes. Standard height is 28". Comes standard in black finish but is available in any of our standard epoxy colours or in a polished chrome finish at an upcharge.

BASE #	DESCRIPTION
2015	22" Spread for 24" to 30" Tops
2025	30" Spread for 32" to 40" Tops
2033	33" Spread for 40" to 48" Tops
2099	22" x 30" Offset Spread for Small Rectangular Tops



5300 SERIES CAST IRON TABLE BASE

Cast Iron X base with raised profile provides a sturdy table base for tops of all sizes. Standard height is 28". Comes standard in black finish but is available in any of our standard epoxy colours or in a polished chrome finish at an upcharge.

BASE #	DESCRIPTION
5300-22	22" Spread for 24" to 30" Tops
5300-30	30" Spread for 32" to 42" Tops



1900 SERIES CAST IRON TABLE BASE

Cast Iron round base with flat round surface provides a sturdy table base for tops of all sizes. Standard height is 28". Comes standard in black finish but is available in any of our standard epoxy colours at an upcharge.

BASE #	DESCRIPTION
1917	17" Spread for 18" to 24" Tops
1922	22" Spread for 25" to 30" Tops
1930	30" Spread for 32" to 42" Tops

TABLE CODE NUMBER FORMULA

$$\begin{array}{ccccccc}
 \text{SPF} & + & 100 & + & \text{FT} & + & 4242 & + & \text{PV} & = & \text{SPF100FT4242PV} \\
 \text{Prefix} & & \text{Base \#} & & \text{Options} & & \text{Top Size} & & \text{Edge Type} & & \text{Table Code \#}
 \end{array}$$



4125 SERIES CAST IRON TABLE BASE

Cast Iron base provides a sturdy table base with decorative design for tops of all sizes. Standard height is 28". Comes standard in black finish but is available in any of our standard epoxy colours at an upcharge.

BASE #	DESCRIPTION
4125	25" Spread for 30" to 42" Tops



FAUX "WOOD GRAIN" METAL TABLE BASE, X-STYLE

Superior in strength and stability to cast iron. 11" beveled spider. 4" x 25" diameter column. Self Levelling glides. Available in 6 different wood grain finishes that will not chip, see page 74 for options. Custom sizes available.

BASE #	DESCRIPTION
TB-36X36-WGB	36" Spread for 36" to 42" Tops



FAUX "WOOD GRAIN" METAL TABLE BASE, ROUND

Superior in strength and stability to cast iron. 11" beveled spider. 4" x 25" diameter column. Self Levelling glides. Available in 6 different wood grain finishes that will not chip, see page 74 for options. Custom sizes available.

BASE #	DESCRIPTION
TB-30R-WGB	36" Round for 36" to 42" Tops



TABLE CODE NUMBER FORMULA

SPF	+	100	+	FT	+	4242	+	PV	=	SPF100FT4242PV
Prefix		Base #		Options		Top Size		Edge Type		Table Code #

Pedestal Bases



Tables



PD4008 TABLE BASE

Solid Beechwood wood base. Standard height is 28". Available in any standard wood finish.

BASE #	DESCRIPTION
PD4008	27"x 27" Spread for 36" to 42" Tops



PD4009 TABLE BASE

Solid Beechwood wood base. Standard height is 28". Available in any standard wood finish.

BASE #	DESCRIPTION
PD4009	27"x 27" Spread for 36" to 42" Tops



PD4010 TABLE BASE

Solid Beechwood wood base. Standard height is 28". Available in any standard wood finish.

BASE #	DESCRIPTION
PD4010	32"x 32" Spread for 36" to 48" Tops

TABLE CODE NUMBER FORMULA

$$\begin{array}{ccccccc}
 \text{SPF} & + & \text{100} & + & \text{FT} & + & \text{4242} & + & \text{PV} & = & \text{SPF100FT4242PV} \\
 \text{Prefix} & & \text{Base \#} & & \text{Options} & & \text{Top Size} & & \text{Edge Type} & & \text{Table Code \#}
 \end{array}$$



#508 FAUX WOOD GRAIN TAPERED METAL TABLE LEGS

Our four legged metal tapered leg bases with faux wood grain finish are durable, lightweight and sturdy. The highly scratch resistant finish is applied using a 3 step heat transfer process ensuring the look and feel of wood. Legs are securely fastened with a metal corner bracket to the base apron. Standard height is 28" but custom heights are available upon request. Bases will accommodate square tops sizes 36"x36", 38"x38", 40"x40", 42"x42", 48"x48" and also 48" round. All legs have a height adjustable glide on the bottom for levelling the table. Available in 8 different wood grain finishes that will not chip, see page 67 for options.



#500 ROUND METAL TABLE LEGS

The #500 round legs are a 2.5" diameter, 14g steel leg. All legs have adjustable glides on the bottom to help with levelling. Each leg has a flat metal mounting plate at the top of the leg to allow for easy mounting to any table top. Standard height is 28" but custom heights are available upon request. Choose from any of our standard epoxy coatings for the finishing on the legs. Legs are available with optional 3" adjustable height cup glides and also available with optional casters on all four legs or just two legs.



#504 WOOD TABLE LEGS WITH APRON

Our four legged bases are made of solid hardwoods and finished in any of our standard wood finishes. Legs are securely fastened with a metal corner bracket to the base apron. Base aprons are available with a cut out to allow chair arms to access under the table. Standard height is 28" but custom heights are available upon request. Bases will accommodate square tops sizes 36"x36", 38"x38", 40"x40", 42"x42", 48"x48" and also 48" round. All legs have a height adjustable glide on the bottom for levelling the table.



TABLE CODE NUMBER FORMULA

SPF	+	100	+	FT	+	4242	+	PV	=	SPF100FT4242PV
Prefix		Base #		Options		Top Size		Edge Type		Table Code #

Specialty Tables



Tables



ADAPTIVE DINING TABLE

Our rehab Adaptive Table is an innovative product with custom settings for each of the 4 seat locations. Each location is height adjustable from 27" to 37". The base is made from rugged tubular steel coated with static polyester. Table tops are 1" laminate coated with rounded corners and edged in fungicidal (anti-mold) PVC. Table comes with one transport wheel on the end of one leg for easy transporting by tipping the table up slightly on to that wheel and rolling the table. Table has Revolving Centre Condiment Tray, Adjustable Slide Out Depth Adjustment on Sectional Trays and Weight Compensating Column Springs. Bases are baked on brown epoxy finish for long lasting durability. Available in Walnut (shown) or Natural Maple laminates.

ITEM #	DESCRIPTION
SPFITDC*4PA-SP-M	Adaptive Dining Table, 4-seat, Natural Maple
SPFITDC*4PA-SP-W	Adaptive Dining Table, 4-seat, Walnut

FEEDING STOOLS



Our feeding stool includes a swivel mechanism featuring a 5.5" pneumatic seat-height adjustment and uses high-density, high resilience foam for added durability and comfort. A five prong heavy-duty nylon base ensures stability. Base, casters and trim come standard in black. Available with or without back. Optional self locking casters are available that lock automatically when someone sits on the stool for ultimate safety.

ITEM #	DESCRIPTION
SPFNT1000	Feeding Stool, No Back
SPFNT1000-LC	Feeding Stool, No Back, Self Locking Casters
SPFNT1000WB	Feeding Stool, With Back
SPFNT1000WB-LC	Feeding Stool, With Back, Self Locking Casters

50 SERIES FOLDING LEG TABLE



Designed for rectangular tops, this standard folding leg table features metal legs in your choice of brown or black epoxy coatings. Tops are high pressure laminate in any of the laminate manufacturers standard laminates. Tops are available in 30"x60", 30"x72", 30"x84", 30"x96", 36"x60", 36"x72", 36"x84" and 36"x96" and with any of the standard edge details.

BASE #	DESCRIPTION
50	Folding Base for Rectangular tops



FLIP TOP OPTION

The flip top option allows the top to be flipped up vertically in order to provide extra space for storing the table. This option is available on any of the 100 series of tables. Add "FT" after the base number in the table code number to add the Flip Top option on the table.



SELF LEVELLING GLIDE OPTION

All tables come standard with a nylon, manually adjustable glide. The self levelling glide is available as an option on all the 100 and 500 series tables. This glide will automatically adjust to any unlevel surfaces without having to bend down and adjust the glide. Perfect for eliminating wobbly tables every time they are moved to a different location on the floor. Add "SL" after the base number in the table code number to add the Self Levelling Glide option on the table.



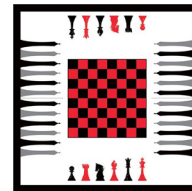
CASTER OPTION

Casters can be added to any of the 100 or 500 series tables. Tables can have all four casters (4C) or two casters/two glides (CG) depending on your preference. Add "4C" or "CG" after the base number in the table code number to add the caster options on the table.



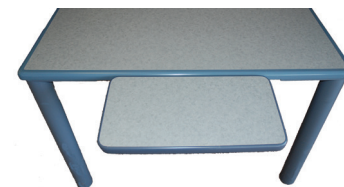
CUSTOM INLAY TOPS

Tops can be customized to have inlay designs such as the games inlay shown. Custom laminate designs with inlay poly resin seams can also be done.



DROP LEAF EXTENSION

This 10" x 20" drop leaf extension is available on the 42x42 or 48x48 square table tops as an option. The drop leaf flips out and locks in to place for residents in wheelchairs to have a table platform close to them and then neatly folds and tucks under the table when not in use. Two drop leaves per table mounted on opposite sides of the table so that the two other sides of the table can be used for normal seating.



Untucked



Tucked

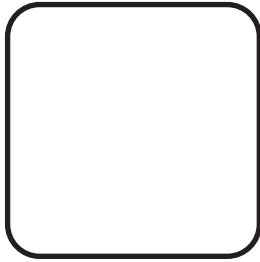
TABLE CODE NUMBER FORMULA

SPF	+	100	+	FT	+	4242	+	PV	=	SPF100FT4242PV
Prefix		Base #		Options		Top Size		Edge Type		Table Code #



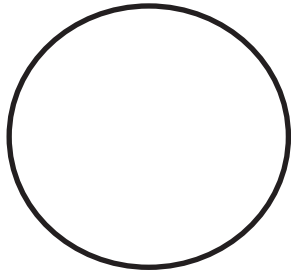
Top Shapes and Sizes

Tables



SQUARE TOPS

Tops are 1 1/8" thick, 45lb particle board core with a high pressure laminate surface in any of the laminate manufacturer's standard laminates and a phenolic balance sheet on the underside. All corners are 1" radius (other radius sizes available if requested). Tops are available in 24"x24", 30"x30", 32"x32", 36"x36", 38"x38", 40"x40", 42"x42" and 48"x48" and with any of the standard edge details.



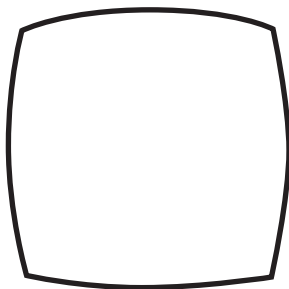
ROUND TOPS

Tops are 1 1/8" thick, 45lb particle board core with a high pressure laminate surface in any of the laminate manufacturer's standard laminates and a phenolic balance sheet on the underside. Tops are available in 24", 30", 32", 36", 38", 40", 42" and 48" round and with any of the standard edge details.



RECTANGULAR TOPS

Tops are 1 1/8" thick, 45lb particle board core with a high pressure laminate surface in any of the laminate manufacturer's standard laminates and a phenolic balance sheet on the underside. All corners are 1" radius (other radius sizes available if requested). Tops are available in 24"x30", 24"x36", 30"x36", 30"x42", 30"x48", 30"x60", 30"x72", 30"x84", 30"x96", 36"x48", 36"x60", 36"x72", 36"x84" and 36"x96" with any of the standard edge details.



RADIUS SQUARE TOPS

Tops are 1 1/8" thick, 45lb particle board core with a high pressure laminate surface in any of the laminate manufacturer's standard laminates and a phenolic balance sheet on the underside. Tops are available in 36"x36"/42"x42", 38"x38"/44"x44" and 42"x42"/48"x48" sizes with any of the standard edge details. Use the larger of the two dimensions with "RS" at the end of it as the code number for the top. Ie...the 36" x 36"/42" x 42" Radius Square top would be could "4242RS"

TABLE CODE NUMBER FORMULA

SPF	+	100	+	FT	+	4242	+	PV	=	SPF100FT4242PV
Prefix		Base #		Options		Top Size		Edge Type		Table Code #



PVC EDGE (PV)

1 1/8" x 1/4" T-mold PVC edge provides a protective edging on any table. Available in any of the standard edge/base colours. Use "PV" as the code for this edge when creating your table code number.



PVC BULLNOSE EDGE (PB)

1 1/8" x 3/4" T-mold PVC edge provides a protective edging on any table. Available in any of the standard edge/base colours. Use "PB" as the code for this edge when creating your table code number.



WOOD BULLNOSE EDGE (WB)

Solid wood, bullnosed edge is 1"x1" in size and is available in solid oak or maple. Edge can be stained to match any wood finish. Use "WB" as the code for this edge when creating your table code number.



POLY RESIN EDGE (PR)

Special formulated poly resin is poured in to an edge mold as a liquid and then solidifies to become a solid, seamless one piece edge. Colour is solid all the way through the edge so any scratches can be sanded smooth with steel wool and shined back to the original beauty with Armour-all. Use "PR" as the code for this edge when creating your table code number.



RAISED SPILL PROOF POLY RESIN EDGE (RS)

Same qualities as the poly resin edge above except built up on the edge to prevent any liquids that are spilled from rolling off the table. Use "RS" as the code for this edge when creating your table code number.

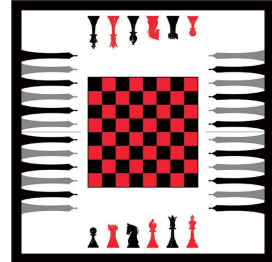
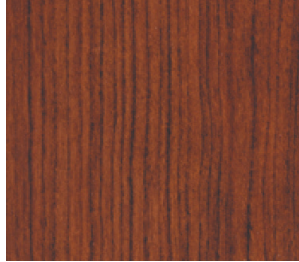


TABLE CODE NUMBER FORMULA

SPF + 100 + FT + 4242 + PV = SPF100FT4242PV
 Prefix Base # Options Top Size Edge Type Table Code #



Top Laminate



A variety of High Pressure laminates from all the major manufacturer's are available for all table tops. Choose from pattern or wood grain laminates. Visit the laminate manufacturer's website to view all the standard laminates available to choose from. Special Games Laminate shown above is available for any table.

Tables



www.wilsonart.com



www.pionitelaminates.com



www.nevamar.com



www.formica.com

Table Epoxy Base and Edge Colour Choices



STANDARD EPOXY BASE & EDGE COLOUR CHOICES FOR TABLES



Black - RAL9004



Graphite - RAL7022



Brown - RAL8017



Dark Blue - RAL5011



Graphite Blue - RAL7031



Light Grey - RAL7004



Stone - RAL7006



Beige - RAL1019

Note: Actual colour may vary from picture shown due to printing limitations. Please request an actual colour sample chip if an exact sample is needed.

Tables

HOYER ADVANCE LIFT



The Hoyer Advance is compact, yet able to perform an outstanding range of transfers. Whether from the floor or onto a healthcare bed, the Advance copes with ease. The Advance's unique tapered leg design allows the lift to get even closer to the widest of obstacles. This is especially useful when encountering large chairs, bulky commodes, and wheelchairs. The tapered design also ensures that the resident feels safe and secure during the transfer. Comes standard with two batteries, charger and wall bracket.



Exceptionally Versatile
No-tools folding design allows for compact storage



Oversized Handle
The oversized handle provides a large surface area, from which the caregiver can maneuver the lift before use.



Design
The triangular fold design ensures two very important functions.
1. The lift stands unaided when being stored or transported.
2. The lift can be safely left with the knowledge that it will not become unstable while not in use.



Footpad
The push footpad has been designed to reduce the force needed to initiate movement when maneuvering the stationary lift in a forward direction.

SPECIFICATIONS

MAXIMUM OVERALL LENGTH - 51.2"
MINIMUM OVERALL LENGTH - 49.2"
MAXIMUM OVERALL HEIGHT - 73.2"
MINIMUM OVERALL HEIGHT - 53.5"

OVERALL HEIGHT OF LEGS - 4.5"
TOTAL WEIGHT - 69.7 lbs
SAFE WORKING LOAD - 341 lbs

ITEM

SPFHOY-ADVANCE
SPFNA1051
SPFNA1054
SPFNA1057
SPFNA1059

DESCRIPTION

HOYER ADVANCE ELECTRIC LIFT
QUICK FIT DELUXE MESH SLING, SMALL
QUICK FIT DELUXE MESH SLING, MEDIUM
QUICK FIT DELUXE MESH SLING, LARGE
QUICK FIT DELUXE MESH SLING, X-LARGE

*** Additional Sizes of Slings are Available for Different Resident Needs - Ask Your Sales Representative for the Complete List of Available Slings.**

HOYER PRESENCE LIFT



The Hoyer Presence lift has been engineered and designed to handle almost any resident handling task. Along with the Stature lift, the Presence can lift residents from the floor as well accommodate transfers to higher surfaces. The 500 lbs safe working load and greater spatial area make this lift a perfect fit for larger residents. Comes standard with two batteries, charger and one wall bracket.



Interchangeable Cradle Bars
Part of the restriction of using certain lifts are the slings that you can use on the product. The Presence however, gives you a choice of sling systems.



Powered Base
Operating the Presence is as simple as the push of a button. The base includes two electric actuators which allow the caregiver to open and close the legs without bending or twisting.



Scale Option
Easy to use with intuitive controls, the digital scale is NAWI Class III rated and ideal for patient monitoring. Importantly, it does not compromise lifting height.



Foot Pad
Ergonomic foot pad to assist with initiating movement.

SPECIFICATIONS

MAXIMUM OVERALL LENGTH - 57.5"
MINIMUM OVERALL LENGTH - 55.1"
MAXIMUM OVERALL HEIGHT - 81.3"
MINIMUM OVERALL HEIGHT - 57.5"

OVERALL HEIGHT OF LEGS - 4.7"
TOTAL WEIGHT - 88 lbs
SAFE WORKING LOAD - 500 lbs

ITEM #

DESCRIPTION

SPFHOY-PRESENCE	HOYER PRESENCE ELECTRIC LIFT
SPFHOY-PRESENCEWSC	HOYER PRESENCE ELECTRIC LIFT W/DIGITAL SCALE
SPFNA1051	QUICK FIT DELUXE MESH SLING, SMALL
SPFNA1054	QUICK FIT DELUXE MESH SLING, MEDIUM
SPFNA1057	QUICK FIT DELUXE MESH SLING, LARGE
SPFNA1059	QUICK FIT DELUXE MESH SLING, X-LARGE

*** Additional Sizes of Slings are Available for Different Resident Needs - Ask Your Sales Representative for the Complete List of Available Slings.**

HOYER JOURNEY SIT TO STAND LIFT



Our new Journey lift is an ultra compact, portable folding standaid with best-in-class functionality. It is compact and lightweight allowing caregivers to maneuver in tight spaces while folding for easy storage or transportation. The first on the market adjustable cow-horn mechanism supports a range of patient heights and sizes, allowing your facility to have one lift that meets the needs of many. Our careful attention to product design with the Journey ensures that both the caregiver's and the resident's needs have been met. Comes standard with two batteries, charger and one wall bracket.



Unique Folding Design

The Journey's unique folding design stands unaided for easy storage. The compact design also provides an ideal size for transporting. It is the only standaid on the market that folds.



Adjustable Cow-Horn

The unique adjustable cowhorn mechanism supports a range of resident heights and sizes. It is also ideal for transfers from low chairs.



Adjustable Kneepad

The sculpted knee pad is easily adjusted for ultimate patient comfort. Adjustable with one hand.



Newly Designed Bump Guard

Our newly designed bump guard provides additional protection against base plates and paint finishes in your facility.

SPECIFICATIONS

MAXIMUM OVERALL LENGTH - 39.4"

MINIMUM OVERALL LENGTH - 36.8"

MAXIMUM OVERALL HEIGHT - 63"

MINIMUM OVERALL HEIGHT - 44.5"

OVERALL HEIGHT OF LEGS - 4.3"

TOTAL WEIGHT - 88.6 lbs

SAFE WORKING LOAD - 341 lbs

ITEM

SPFH0Y-JOURNEY

SPFNA13499N

SPFNA13500N

SPFNA13498N

DESCRIPTION

HOYER JOURNEY SIT TO STAND LIFT

DELUXE STAND AID SLING, SMALL

DELUXE STAND AID SLING, MEDIUM

DELUXE STAND AID SLING, LARGE

GENEVA RL8 COMBI CHAIR LIFT



The RL8 provides a dignified solution for residents requiring assistance getting in and out of recumbent bathtubs. The RL8 Combi-Lift is for residents that desire or need to be in a seated position, however, by attaching the stretcher components it can be converted to a stretcher lift for those requiring to be in a supine position. The conversion from a bath chair to a stretcher lift is simple and requires no tools. This unique feature allows the versatility needed to accommodate a broader resident population.

The wide and padded seat and stretcher surface, ergonomically designed safety arm supports, and safety belts ensures a comfortable and secure bathing experience for the resident. The seat and stretcher surfaces are made of a soft and durable material that is non-water absorbent, making it easy to clean and maintain.

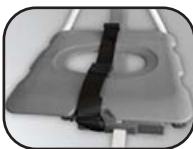
The foot-operated raise and lower function control is strategically located on the rear of the bath lift, allowing the caregiver the use of both hands to aid the resident. The belt-driven raise and lower function is smooth and quiet, and the large hospital grade castors make moving the RL8 effortless. Manufactured with the highest quality materials, including stainless steel components, the RL8 will provide years of service and low cost of ownership. Optional scale with digital read-out is available.



Low and narrow chassis that easily maneuvers under beds and bathtubs.



Foot activated emergency stop button and magnetic charger port.



Commode Seat for perineum cleaning/toileting, includes lid to cover opening.



Comfortable back rest made of a soft and durable material that is easy to clean.

SPECIFICATIONS

OPERATING HEIGHT RANGE - 57.5"

WEIGHT LIMIT - 330 lbs

ITEM #

- SPFRL8-542020
- SPFRL8-1650
- SPFRL8-542030

DESCRIPTION

- GEVEVA RL8 COMBI CHAIR LIFT
- DIGITAL SCALE OPTION FOR LIFT
- STRETCHER CONVERSION KIT FOR LIFT

GENEVA RS8 SUPINE BATHING TUB



The Geneva RS8 is designed to bathe highly dependent residents safely and comfortably and is compatible with a wide range of transport and lifting devices. The key-hole shape enhances patient comfort with extra room for the shoulders and arms, plus allows the caregiver closer and greater access to bathe the resident. The height is raised or lowered at the touch of a button and allows the caregiver to work at the proper height, thus eliminating back strain. The optional Auto-fill eliminates waiting and/or observation time when pre-filling the bathtub to a pre-set level.

The smooth and soft lines of the Geneva RS8 will enhance the look of your bathing area and allow for effortless maintenance and cleaning. Standard features include adjustable height, Air Spa Micro-Bubble system for therapeutic relief without disinfection concerns, thermostatic mixing valve with anti-scald protection, battery backup, built-in disinfection system and hand held shower wand. 5 year warranty on shell & finish, 3 years on moving parts.

STANDARD FEATURES

- Thermostatic Mixing Valve with anti-scald protection that dispenses 15 gallons per minute for fast tub fill.
- Battery Back-up in case of power failures.
- Built-in Disinfection System that is the most time-efficient solution for disinfection of the bath's external surfaces and minimizes the risk of cross-infection.
- Handheld Shower Wand for hair and upper body washing, which can be used at the same time the tub is filling.
- Analog Thermometer for monitoring tub-fill and shower wand temperatures.
- 3/4" Supply Lines constructed of stainless steel.

SPECIFICATIONS

OVER-ALL LENGTH - 90"

WEIGHT CAPACITY (OCCUPANT)- 600 lbs, 272.7 kg

OVER-ALL WIDTH - 25.5"

WATER CAPACITY (OCCUPIED) - 64 gallons, 242.2 L

RIM HEIGHT (LOWEST SETTING) - 30"

ITEM

DESCRIPTION

SPFRS8HDS

GENEVA RS8 SUPINE BATHING TUB, ADJUSTABLE HEIGHT

SPFAUTOFILL

AUTOFILL UPGRADE OPTION FOR GENEVA TUB

VICTORIA RG9 FREESTANDING BATHING TUB



The RG9 Victoria is a freestanding tub that allows the caregiver 360° unobstructed access to the resident. The low threshold and wide side-entry door allows easy access for residents with various degrees of mobility and the built-in contoured seat allows the resident to sit comfortably and safely in a slightly reclined position. For your dependent residents, the RG9 Victoria is specifically designed for use with the RL9 Bath Lift, which provides seamless transfers from bed-to-bath in a comfortable and safe seated position. The sleek exterior design of the RG9 Victoria bathing system will give your bathing area an upscale look.

Caregivers will enjoy the RG9 Victoria for its ease of use and the improved quality of care they can provide the resident. Featuring a full range of standard and optional features, the RG9 Victoria bathing system is designed to enhance the bathing experience for the resident.

STANDARD FEATURES

- Thermostatic Mixing Valve with anti-scald protection that dispenses 15 gallons per minute for fast tub fill.
- Built-in Disinfection System that is the most time-efficient solution for disinfection of the bath's external surfaces and minimizes the risk of cross-infection.
- Handheld Shower Wand for hair and upper body washing, which can be used at the same time the tub is filling.
- Analog Thermometer for monitoring tub-fill and shower wand temperatures.
- Lap and Shoulder Harness for resident safety.
- Secondary Door Lock to prevent accidental door opening when in use.
- 3/4" Supply Lines constructed of stainless steel.

SPECIFICATIONS

OVER-ALL LENGTH - 60.75"

OVER-ALL WIDTH - 33"

HEIGHT (TO TOP OF CONSOLE) - 43" (LOWEST)

WHEIGHT (TO TOP OF DOOR) - 36.5" (LOWEST)

WEIGHT CAPACITY (OCCUPANT)- 600 lbs, 272.7 kg

WATER CAPACITY (MAXIMUM) - 52 gallons, 196.8 L

ITEM


SPFRG9

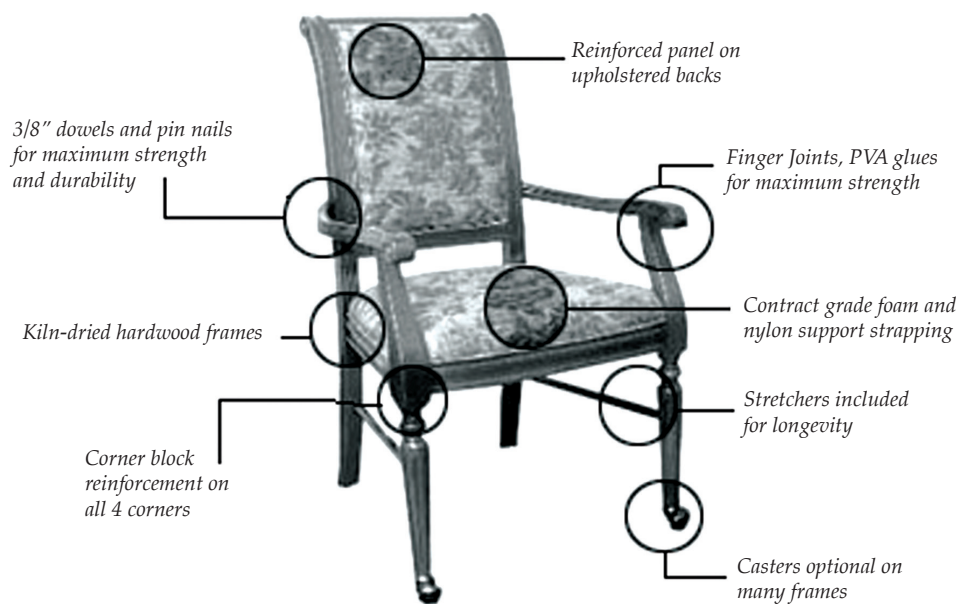
DESCRIPTION

VICTORIA RG9 FREESTANDING BATHING TUB

Seating Specifications

WOOD SEATING SPECIFICATIONS

- 1.0 Frame: All upholstered (non-exposed) frame lumber shall be sound grade dried (7%), mixed hardwood for strength and dimensional stability. All exposed wood shall be milled from kiln dried hardwood, premium grade selected free of visual and structural defects, beechwood or alternate hardwood.
- 2.0 Frame Assembly: All joints are mortise and tenoned, hydraulically assembled, then glued and pinned for extra strength. Corner blocks are fitted to leg and rail and attached with low root screws and glue. All exposed parts are machined round and are sanded to a smooth finish.
- 3.0  Standard Wood Finish Process: All exposed hardwood frames are finish with a catalyzed lacquer using special environmentally friendly, water based process and offers superior resistance to abrasives and chemicals commonly found in a healthcare/hospitality environment. This finish is highly resistant to hot/cold checking and successfully tested to temperature ranges between 120 deg. F to -5 deg. F.
- 4.0 Foam: Upholstery and cushion foam shall be high resiliency (HR) of varying density and flame/fire retardant. All foam, at a minimum, shall meet California Technical Bulletin 117 (TB-117) for flame and fire retardancy. Foam cushioning is selected for comfort and durability.
- 5.0 Inspection: The entire frame and upholstery shall be inspected during the Manufacturing process and again after final assembly. Tailoring shall be neat, trim and applied in a professional manner. All legs will be levelled on our automated levelling machine.



CASEGOOD SPECIFICATIONS

- 1.0 Wood Components: All hardwood shall be kiln dried solid lumber, premium grade selected free of visual and structural defects, species as specified per product.
- 2.0 Wood Veneer Components: Wood species as specified per product. Core to be minimum 45lbs density. All panels are rotary cut and sealed on front, bottom and back panels.
- 3.0 Top Construction: High Pressure laminate, Vinyl Wrapped or Melamine surface as specified per product. Contract grade particle core with minimum density of 45 lbs. Edges to be pvc, vinyl wrapped or high density board as specified per product.
- 4.0 End Panel Construction: Wood veneer or Melamine laminate panel with Contract Grade flake board, 45 lbs. minimum density. Wood or PVC banded on the front edge. PVC banded on the bottom and back edge to prevent moisture absorption.
- 5.0 Drawer Front and Kick Plate Construction: Solid Wood, Vinyl Wrap or Melamine surface as specified per product. Vinyl wrap and Melamine components have contract grade particle core with minimum density of 45 lbs and edges to be pvc, vinyl wrapped or high density board as specified per product.
- 6.0 Drawer Construction: Drawer boxes shall be four-sided, mitre jointed wrap-around boxes. A 1/8" fiberboard bottom will be used. Each box shall be vinyl wrapped and moisture sealed. Bottom in box will be glued, and stapled to drawer box. Glides are side mounted drawer glides with a 75 lb. rating.
- 7.0 Doors: Hinges are European hinges, with varying degrees of swing dependent upon the case.
- 8.0 Rear Casters and Front Glides: All units to come complete with two rear nylon casters for ease of mobility and two front adjustable height glides for unit levelling.
- 9.0 Wood Finish Standards: Standard finish shall be comprised of a high solid (over 40%), catalyzed, conversation lacquer offering superior resistance to abrasives and chemicals commonly found in a healthcare/hospitality environment. This material must be highly resistant to hot/cold checking and successfully tested to temperature ranges between 120 deg. F to -5 deg. F.

Table Specifications

TABLE SPECIFICATIONS

1. Wood Bases: All hardwood shall be kiln dried solid lumber, premium grade selected free of visual and structural defects, species as specified per product. Bases come standard with adjustable height nylon glides for easy levelling of the table.
2. Metal Bases: All steel bases are 14g to 16g steel with all welds ground smooth and polished to a flawless finish. Steel is coated with a baked on powder epoxy coating in a choice of colours. All cast iron bases have a die cast bottom section with a 16g steel column and finished in a black epoxy coating. Bases come standard with adjustable height nylon glides for easy levelling of the table.
3. Top Construction: High Pressure laminate surface as specified with a contract grade particle core with minimum density of 45 lbs and a phenolic balance sheet on the underside. Edges to be pvc, wood, high density board or poly resin as specified per product.
4. Standard Wood Finish Process: Standard finish shall be comprised of a high solid (over 40%), catalyzed, conversation lacquer offering superior resistance to abrasives and chemicals commonly found in a healthcare/hospitality environment. This material must be highly resistant to hot/cold checking and successfully tested to temperature ranges between 120 deg. F to -5 deg. F.

Warranty

WARRANTY

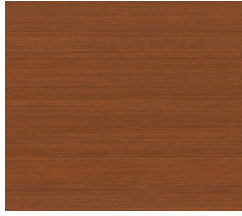
The original purchaser of Specialty furniture is protected against defective workmanship and components for a period of five years from the date of purchase. This warranty does not cover upholstery coverings or table laminates unless the claim is due to poor workmanship in application. This warranty does not cover transportation costs to and from the factory/repair depot. Specialty Furniture will replace or repair defective furniture at our option free of charge. In no event shall liability under this warranty exceed the original purchase price of furniture. No credit for repairs will be allowed without specific written authorization. This warranty does not apply to furniture damaged by accident, abuse, neglect, or misuse; unauthorized repairs; or freight damage

Standard Wood & Faux Wood Finishes

STANDARD* WOOD STAIN CHOICES



Warm Walnut



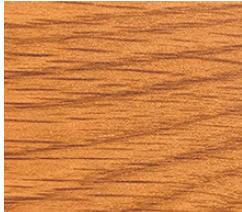
Bayou Walnut



Spiced Cherry



Millwork Cherry



Oak



Natural Maple

* Custom stain finishes are available for all wood pieces provided a sample is provided to match and also a minimum order level is met. Contact your sales representative for more details.

FAUX WOOD GRAIN METAL CHAIR & TABLE BASE FINISHES



F10 - Dark Walnut



24 - Hickory



27 - Mid Cherry



D12 - Harvest Maple



20 - Light Oak



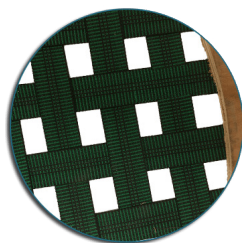
Natural Maple

Note: Actual colour may vary from picture shown due to printing limitations. Please request an actual sample if needed.

ALUMINUM FRAME CHAIR OPTIONS



Caster Options



Webbed Seat



Metal Glides



Nylon Glides

Specifications

ph: 1.866.559.5099
fx: 1.866.618.6095
web: *www.specialtyfurniture.ca*
email: *info@specialtyfurniture.ca*

Version 2020-1